

CONTROLLERS

CONTROLLER SERIES CRB100

ESBE series CRB100 is an indoor sensor based controller with integrated actuator, highly user friendly interface and quick and simple installation. Settings are done via a room display unit with integrated indoor sensor, which can either be connected to the actuator unit through cable (CRB110) or through wireless radio connection (CRB120).

OPERATION

The series CRB100 controller is designed to provide a high level of comfort and at the same time provide energy savings for the house owner.

The controller consists of two main parts:

- actuator unit, to be mounted to the mixing valve controlling the heat supply, equipped with a flow pipe sensor with 1.5 m cable. Available with power supply for 230 VAC (ready to use, 1.5 m cable with wall socket plug included).
- room display unit in modern design, which contains the indoor temperature sensor and in which the day-to-day climate adjustments are set. The actuator unit can be connected to the room display unit either by cable (CRB110) or by wireless radio connection (CRB120).

The regulation is based on indoor sensor feedback and is easily changed by altering the target temperature in the room display unit. An alternative target temperature may be activated by an external signal.

CRB113 is available with auxiliary switch pump control as an option, including an external connection box for easy installation.

MOUNTING

To provide the best comfort, the room display unit should be placed in a central open area in the house, out of direct sunlight. The wireless room display unit provides a flexible solution which makes the installation even quicker and easier.

The CRB100 is easily mounted to the ESBE 3- and 4-way valves series G, MG, F and BIV, and with the valves of series VRG and VRB offer even more outstanding regulation accuracy and even simpler mounting.

OPTIONAL EQUIPMENT

Flow pipe sensor, 5m cable _____ Art. No. 1705 31 00

LINKAGE KITS

Required adaptor kits for easily fitting onto an ESBE rotary mixing valve is supplied with each actuator.

Adaptor kits for other mixing valves are available as follows:

Art. No.

1600 06 00 _____ Meibes

1600 07 00 _____ Watts

1600 08 00 _____ Honeywell Corona



CRB111



CRB113



CRB121

SUITABLE MIXING VALVES

The controller is supplied complete with a mounting kit for easy fitting onto an ESBE rotary mixing valve.

- Series VRG100
- Series VRG200
- Series VRG300
- Series VRB100
- Series MG*
- Series G
- Series F ≤ DN50
- Series BIV
- Series H and HG

* Not 5MG

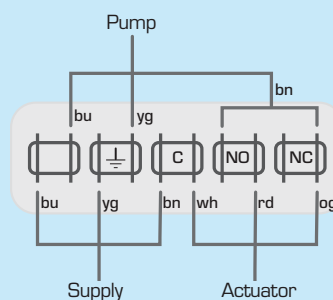
TECHNICAL DATA

Ambient temperature: _____ max. +55°C
 _____ min. -5°C
 Enclosure rating - Actuator unit: _____ IP41
 - Room display unit: _____ IP20
 Protection class: _____ II
 Power supply - Actuator unit: _____ 230 ± 10% VAC, 50 Hz
 - Room display unit - wireless: _____ 2x 1.5 V LR6/AA
 Power consumption - 230 VAC: _____ 10 VA
 Battery endurance, wireless room display unit: _____ 1 year
 Rating auxiliary switch: _____ 6(3)A 250 VAC
 Torque: _____ 6 Nm
 Running time at max. speed: _____ 30s
 Weight: _____ 0.9 kg
 Room display unit cable: _____ 20m
 Radio frequency CRB120: _____ 868MHz
 _____ ITU region 1 approved acc. to EN 300220-2

CE LVD 2006/95/EC
 EMC 2004/108/EC
 RoHS 2002/95/EC

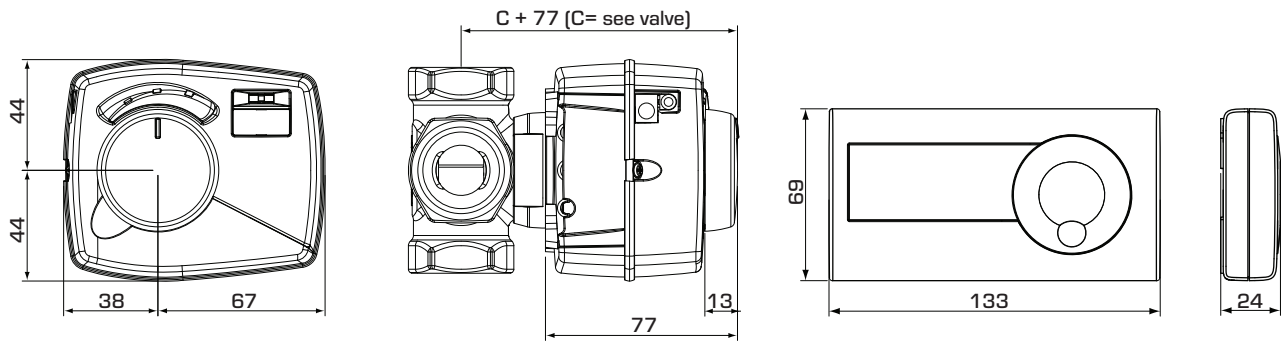
WIRING

The controller should be preceded by a multi-pole contact breaker in the fixed installation.



Controller with pump control wire box, series CRB113

CONTROLLER SERIES CRB100



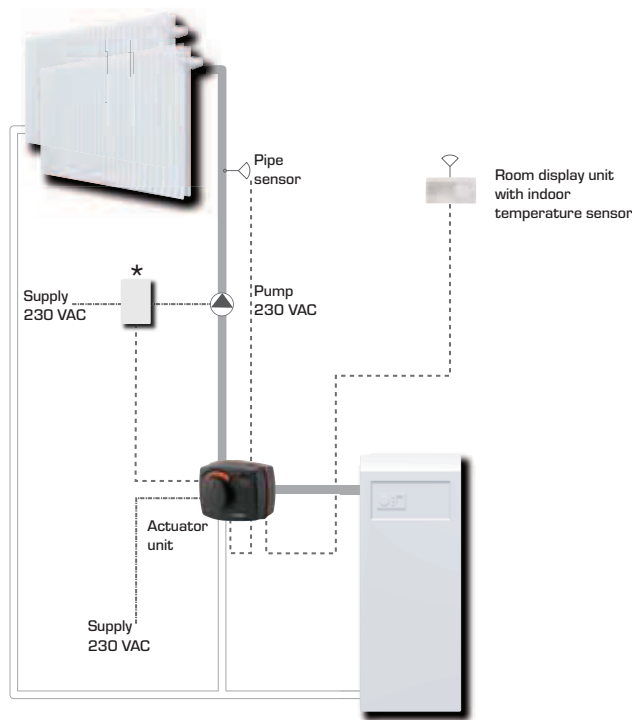
Installation dimensions for Controller Series
CRA110 with ESBE VRG100, VRG200,
VRG300 and VRB100 mixing valves

Installation dimensions for
Room display units

SERIES CRB100

Art. No.	Reference	Voltage [V AC]	Torque [Nm]	Room display unit	Note
1266 01 00	CRB111	230	6	Cable	With pump control wire box
1266 03 00	CRB113				
1266 21 00	CRB121			Wireless	

INSTALLATION EXAMPLE



* Only for CRB113,
Controller with pump control wire box