



AVK BLIND FLANGE W/INTERNAL BSP

712/3910-010

BSP thread 1" - 1 1/2", PN 10/16



AVK's range of fittings comprises a wide selection of variants with socket, tyton and flange connection. The fittings are made of ductile iron min. GJS-400 (GGG-40) and are epoxy coated according to DIN 30677-2 and GSK specifications - internally and externally.



Product description:

Blind flange with internal BSP thread type XI to EN 545 for water, waste water and neutral liquids to max. 70° C

Standards:

- Designed according to EN 545
- Standard flange drilling to EN1092-2 (ISO 7005-2), PN 10/16

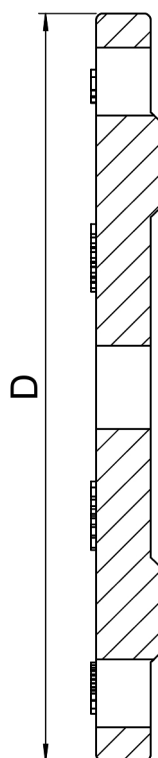


Features:

- Ductile iron fitting to EN 545.
- Body of min. GJS-400-15 (GGG-40).
- Epoxy coated to DIN 30677-2 and GSK guidelines internally and externally.



Expect ... **AVK**

AVK BLIND FLANGE W/INTERNAL BSP**712/3910-010****BSP thread 1" - 1 1/2", PN 10/16****Component list:**

Components may be substituted with equivalent or higher class materials without prior notification.

Reference nos. and dimensions:

AVK ref. no.	DN mm	Flange drilling	D mm	Theoretical weight / kg
712-0040-39-101010 (1)	40	PN10/16	150	1.9
712-0050-39-101010 (1)	50	PN10/16	165	2.4
712-0050-39-101012 (2)	50	PN10/16	165	2.4
712-0060-39-101010 (1)	60	PN10/16	175	2.7
712-0060-39-101012 (2)	60	PN10/16	175	2.7
712-0060-39-101015 (3)	60	PN10/16	175	2.7
712-0065-39-101010 (1)	65	PN10/16	185	3.0
712-0065-39-101012 (2)	65	PN10/16	185	3.0
712-0065-39-101015 (3)	65	PN10/16	185	3.0
712-0080-39-101010 (1)	80	PN10/16	200	3.4
712-0080-39-101012 (2)	80	PN10/16	200	3.4
712-0080-39-101015 (3)	80	PN10/16	200	3.4
712-0100-39-101010 (1)	100	PN10/16	220	4.2
712-0100-39-101012 (2)	100	PN10/16	220	4.2
712-0100-39-101015 (3)	100	PN10/16	220	4.2
712-0125-39-101010 (1)	125	PN10/16	250	5.5
712-0125-39-101012 (2)	125	PN10/16	250	5.5
712-0125-39-101015 (3)	125	PN10/16	250	5.5
712-0150-39-101010 (1)	150	PN10/16	285	7.1
712-0150-39-101012 (2)	150	PN10/16	285	7.1
712-0150-39-101015 (3)	150	PN10/16	285	7.1
712-0200-39-100010 (1)	200	PN10	340	11
712-0200-39-100012 (2)	200	PN10	340	11
712-0200-39-100015 (3)	200	PN10	340	11
712-0200-39-101010 (1)	200	PN16	340	11
712-0200-39-101012 (2)	200	PN16	340	11
712-0200-39-101015 (3)	200	PN16	340	11

The designs, materials and specifications shown are subject to change without notice due to the continuous development of our product programme.

Reference nos. and dimensions:

AVK ref. no.	DN mm	Flange drilling	D mm	Theoretical weight / kg
712-0250-39-100010 (1)	250	PN10	400	17
712-0250-39-100012 (2)	250	PN10	400	17
712-0250-39-100015 (3)	250	PN10	400	17
712-0250-39-101010 (1)	250	PN16	400	17
712-0250-39-101012 (2)	250	PN16	400	17
712-0250-39-101015 (3)	250	PN16	400	17
712-0300-39-100010 (1)	300	PN10	455	24
712-0300-39-100012 (2)	300	PN10	455	24
712-0300-39-100015 (3)	300	PN10	455	24
712-0300-39-101010 (1)	300	PN16	455	24
712-0300-39-101012 (2)	300	PN16	455	24
712-0300-39-101015 (3)	300	PN16	455	24
712-0400-39-100010 (1)	400	PN10	565	44
712-0400-39-100012 (2)	400	PN10	565	44
712-0400-39-100015 (3)	400	PN10	565	44
712-0400-39-101010 (1)	400	PN16	580	44
712-0400-39-101012 (2)	400	PN16	580	44
712-0400-39-101015 (3)	400	PN16	580	44
712-0500-39-100010 (1)	500	PN10	670	77
712-0500-39-100012 (2)	500	PN10	670	77
712-0500-39-100015 (3)	500	PN10	670	77
712-0500-39-101010 (1)	500	PN16	715	77
712-0500-39-101012 (2)	500	PN16	715	77
712-0500-39-101015 (3)	500	PN16	715	77
712-0600-39-100010 (1)	600	PN10	780	121
712-0600-39-100012 (2)	600	PN10	780	121
712-0600-39-100015 (3)	600	PN10	780	121
712-0600-39-101010 (1)	600	PN16	840	121
712-0600-39-101012 (2)	600	PN16	840	121
712-0600-39-101015 (3)	600	PN16	840	121

(1) BSP thread 1" (26x34)
 (2) BSP thread 1 1/2" (40x49)
 (3) BSP thread 1 1/4" (33x42)