

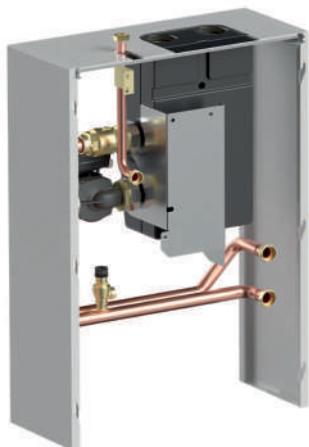
## SEPARATION KITS WITH LOW-LOSS HEADER (SH) FOR IX 145 - 50/70/90/110

Pre-dimensioned hydraulic low-loss header kits which are installed on the rear of the boiler, and comprise:

- A PWM-controlled modulating pump,
- An insulated low-loss header, mud clearing valves and degasser,
- Connection pipes to the boiler with non-return valve and safety valve,
- Top-routed secondary pipes on the boiler,
- A top-routed gas pipe on the boiler (easier connection to boiler room network),
- Casing sheets.

### LOW-LOSS HEADER KIT

- for IX145-50/70 - Package JL203  
(complete kit contents: 3.3 litres)



IX\_Q0151



IX\_Q1000

- for IX145-90/110 - Package JL204  
(complete kit contents: 8.1 litres)



IX\_Q0155



IX\_Q1003

# BOILER OPTIONS

## SEPARATION KITS WITH LOW-LOSS HEADER (SH) FOR IX 245 - 130/150/200/250

Pre-dimensioned hydraulic low-loss header kits which are installed on the rear of the boiler, and contain:

- A 0/10V controlled modulating pump,
- A PWM to 0 - 10V signal conversion module for pump control,
- An insulated low-loss header, mud clearing valves and degasser,
- Connection pipes to the boiler with non-return valve and safety valve,
- Top-routed secondary and gas pipes on the boiler, for easy connection to the boiler room network,
- Casing sheets (except for IX - 200/250 SH).

- for IX245-130/150 - Package JL270 (complete kit contents: 17.5 litres)

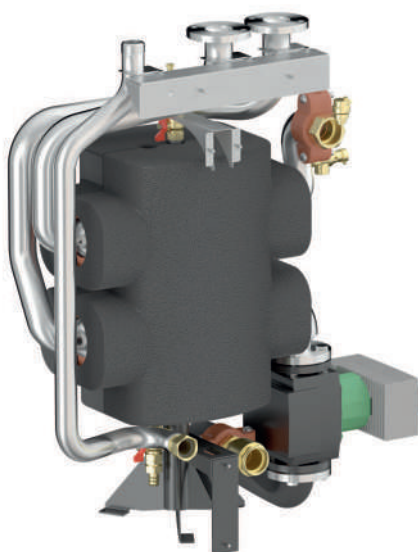


IX-Q0154

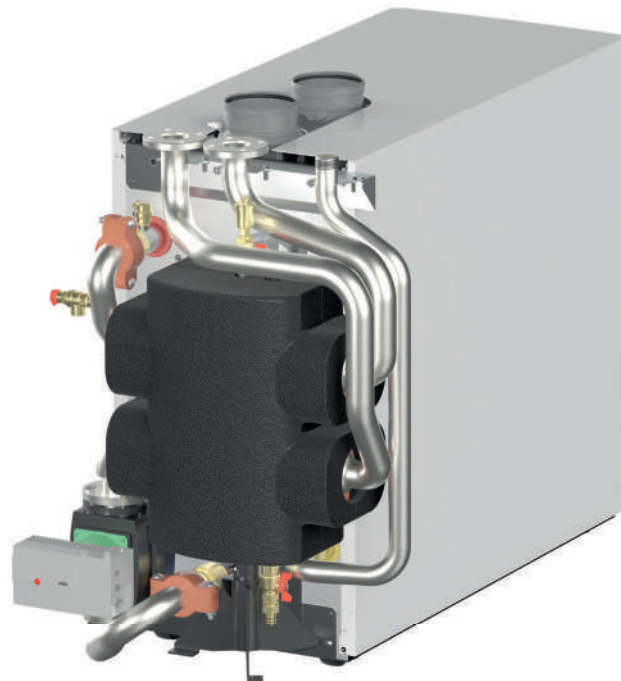


IX-Q1004

- for IX245-200/250 - Package JL271 (complete kit contents: 21.3 litres)



IX-Q0160



IX-Q1006

# BOILER OPTIONS

## SEPARATION KITS WITH PLATE HEAT EXCHANGER (EP) FOR IX 145 - 50/70/90/110

Separation kits with pre-dimensioned plate heat exchanger, which are installed on the rear of the boiler, and contain:

- A PWM-controlled modulating pump,
- An insulated plate heat exchanger,
- An expansion vessel,
- Primary connection pipes to the boiler with non-return valve and safety valve, exchanger drain valve and air bleed,
- Top-routed secondary and gas pipes on the boiler, for easy connection to the boiler room network, drain and cleaning valve,
- Casing sheets.

• for IX145-50/70 - package JL205  
(primary side complete kit contents: 11.6 litres - secondary side exchanger contents: 2.7 litres)



IX\_Q0152

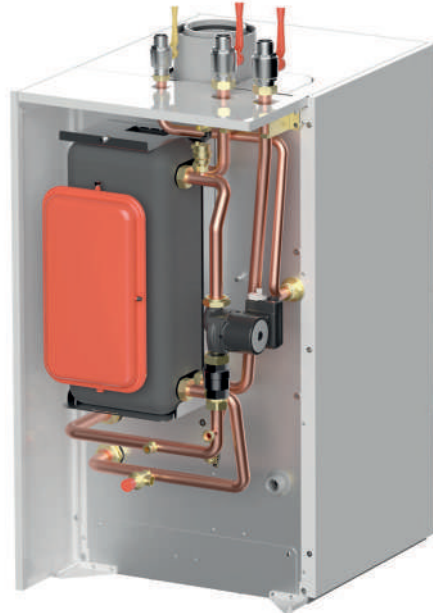


IX\_Q1001

• for IX145-90/110 - package JL206  
(primary side complete kit contents: 13.4 litres - secondary side exchanger contents: 4.4 litres)



IX\_Q0156



IX\_Q1002

### EXCHANGER PRESSURE DROP (to be factored into secondary pump dimensioning)

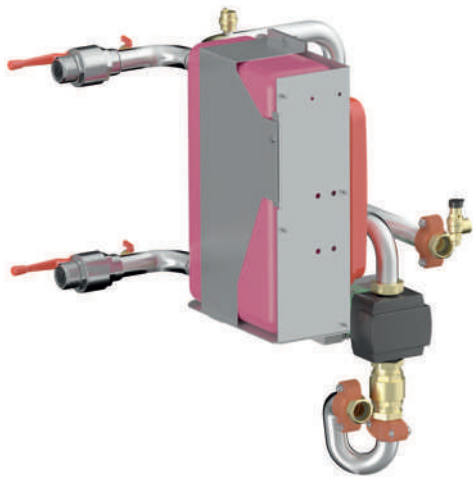
	IX 145-	50	70	90	110
▶ With primary temperature $\Delta T = 20\text{ }^{\circ}\text{C}$					
Secondary flow rate	m <sup>3</sup> /h	2.191	3.068	3.945	4.821
Secondary pressure drop	kPa	4.94	8.36	5.80	8.36
Secondary maximum operating pressure	bar	16	16	16	16

# BOILER OPTIONS

## SEPARATION KITS WITH PLATE HEAT EXCHANGER (EP) FOR IX 245 - 130/150/200/250

- A 0/10V controlled modulating pump,
- A PWM to 0 - 10V signal conversion module for pump control,
- An insulated plate heat exchanger,
- An expansion vessel,
- Primary connection pipes to the boiler with non-return valve and safety valve, exchanger drain valve and air bleed
- Top-routed secondary and gas pipes on the boiler, for easy connection to the boiler room network, drain and cleaning valve.

- for IX245-130/150 - Package JL280  
(primary side complete kit contents: 20.3 litres - secondary side exchanger contents: 6.6 litres)

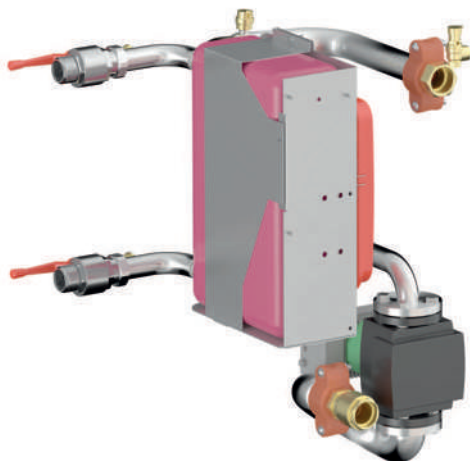


IX\_Q0157

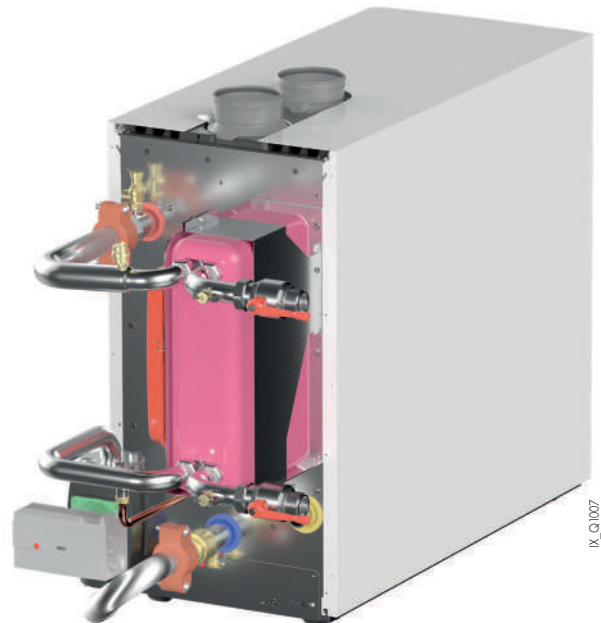


IX\_Q1005

- for IX245-200/250 - Package JL281  
(primary side complete kit contents: 22 litres - secondary side exchanger contents: 6.6 litres)



IX\_Q0159

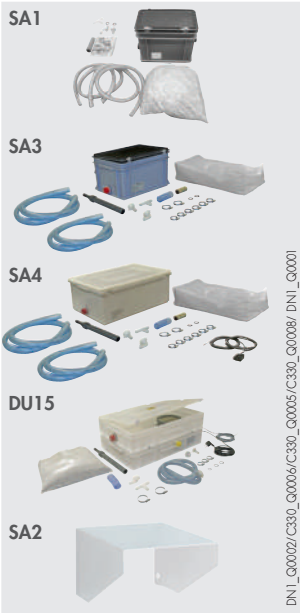


IX\_Q1007

### EXCHANGER PRESSURE DROP (to be factored into secondary pump dimensioning)

	IX 245-	130	150	200	250
▶ With primary temperature $\Delta T = 20\text{ }^{\circ}\text{C}$					
Secondary flow rate	m <sup>3</sup> /h	5.63	6.5	8.66	10.83
Secondary pressure drop	kPa	7.42	9.67	16.5	24.9
Secondary maximum operating pressure	bar	16	16	16	16

# BOILER OPTIONS



DN1\_Q0002/C330\_Q0005/C330\_Q0008/DN1\_Q0001

## GRAVITY FLOW CONDENSATES NEUTRALISATION STATION:

- DN1 (UP TO 75 KW) - PACKAGE SA1
- DN2 (UP TO 450 KW) - PACKAGE SA3
- DN3 (UP TO 1300 KW) - PACKAGE SA9

## CONDENSATES NEUTRALISATION STATION WITH LIFT PUMP FOR BOILERS OR BOILER CASCADES:

- UP TO 120 KW - PACKAGE DU13
- UP TO 300 KW - PACKAGE SA4
- UP TO 1300 KW - PACKAGE DU15

The materials used for the condensate drain pipes must be appropriate. Otherwise, the condensate must be neutralised.

## INSTALLATION SUPPORT FOR NEUTRALISATION STATION - PACKAGE SA2



C330\_Q0009

## GRANULATE RECHARGE FOR NEUTRALISATION STATION - REF. 9422-5601 (10 KG)

## GRANULATE RECHARGE FOR NEUTRALISATION STATION - PACKAGE SA7 (25 KG)

An annual inspection of the system is required, including a check of the effectiveness of the granulates via a pH measurement. If necessary, the granulates must be replaced.



C230\_Q0002/

## 300 MBAR GAS PRESSURE REGULATOR:

- GDJ 15 - PACKAGE SA11
- GDJ 20 - PACKAGE SA12
- GDJ 25 - PACKAGE AD245
- GDJ 50 - PACKAGE AD246

It is fitted on the gas inlet circuit. It is needed if the gas is supplied at a pressure of 300 mbar.

**CAUTION:** The gas controller is limited to an output of 300 kW in a boiler room installation. Above this output, it must be installed outside the boiler room.

CONTROLLER	MAX. NATURAL GAS FLOW RATE IN m <sup>3</sup> /h	MAX POWER CONSUMED IN KW	CONNECTION Ø
GDJ 15	15	150	Rp 1/2"
GDJ 20	34	340	Rp 3/4"
GDJ 25	70	700	Rp 1"
GDJ 50	140	1400	Rp 2"

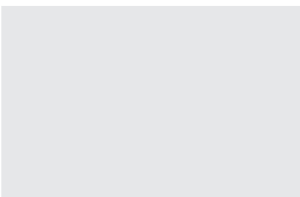


IX\_Q4000

## PROPANE CONVERSION KIT:

(For IX 245 boilers, the propane conversion kits are supplied with the boiler. The kit comprises a diaphragm to be installed on the gas valve unit)

- FOR IX 145- 50 - REF. 7716148
- FOR IX 145- 70 - REF. 7716149
- FOR IX 145- 90 - REF. 7716150
- FOR IX 145- 110 - REF. 7716151



## G25 CONVERSION KIT:

(For IX 245 boilers, a conversion kit is not required)

- FOR IX 145- 50 - REF. 7716152
- FOR IX 145- 70 - REF. 7716153
- FOR IX 145- 90 - REF. 7716154
- FOR IX 145- 110 - REF. 7716155

# BOILER OPTIONS



## DOMESTIC HOT WATER PREPARATION

The De Dietrich independent tanks in the B... series, with a capacity of 150 to 3000 litres, enable production of domestic hot water for individual and collective housing, and industrial and commercial premises. The specifications and performance of these tanks are given in the price catalogue and respective technical leaflets for the independent tanks.

## FLUE GAS SYSTEM



### FLUE GAS SYSTEM KIT WITH NON-RETURN VALVE AND SIPHON:

- Ø 80/110 MM FOR IX 145 - 50/70 - PACKAGE DY433
- Ø 110/110 MM FOR IX 145 - 90/110/130/150 - PACKAGE DY432

The non-return valve is integrated into IX 245-200/250.



- Ø 80 MM PPS EXTENSION (L. 250 MM) (2-PART) - PACKAGE DY613
- Ø 110 MM PPS EXTENSION (L. 500 MM) - PACKAGE DY180