

REMS REG 10 – 54

Outer-inner pipe deburrer

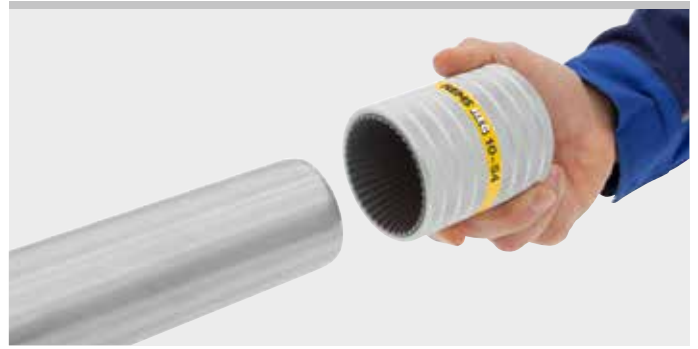
Robust quality tool for removing outer and inner burr from pipes.

Stainless steel pipes, other steel pipes, copper, brass, aluminium, plastic pipes

Ø 10 – 54 mm
Ø ½ – 2 1/8"

REMS REG 10 – 54 – the multiple edge up to Ø 54 mm.

Easy, effortless deburring through multiple blades which are specially hardened and ground.
Robust metal design for tough use.



Supply format

REMS REG 10 – 54. Outer-inner pipe and tube deburrer. For stainless steel pipes, other steel pipes, copper, brass, aluminium, plastic pipes, Ø 10 – 54 mm, Ø ½ – 2 1/8". In blister pack.

	Art.-No.	
	113830	

REMS REG 10 – 54 E

Outer-inner pipe deburrer

Robust quality tool for removing outer and inner burr from pipes. For manual operation or electric drive.

Stainless steel pipes, other steel pipes, copper, brass, aluminium, plastic pipes

Ø 10 – 54 mm
Ø ½ – 2 1/8"

REMS REG 10 – 54 E – by hand or electrically. Especially for stainless steel pipes.

Easy, effortless deburring through multiple blades which are specially hardened and ground.

Integrated hexagonal driver for electrical drive by REMS Helix 22V VE cordless drill/screwdriver (page 108) and other power drills/screwdrivers with 1/4" bit holders (speed ≤ 300 rpm), by the REMS Cento or REMS Cento 22V pipe cutting machine (page 86 – 89) and by the REMS Turbo Cu-INOX pipe circular sawing machine (page 72) (**Patent EP 2 058 067**).

Robust metal design for tough use.



Supply format

REMS REG 10 – 54 E. Outer-inner pipe and tube deburrer for manual or electric operation. For stainless steel pipes, other steel pipes, copper, brass, aluminium, plastic pipes, Ø 10 – 54 mm, Ø ½ – 2 1/8". In blister pack.

	Art.-No.	
	113835	

Accessories

Description
REMS Helix 22V VE , cordless drill/screwdriver, see page 108
REMS Cento , pipe cutting machine, see page 86
REMS Cento 22V , cordless pipe cutting machine, see page 88
REMS Turbo Cu-INOX , pipe circular sawing machine, see page 72