

REMS Pull-Push

Suction and pressure cleaning device

Proven, reliable suction and pressure cleaning device for fast clearance of blockages.

REMS Pull-Push – fast clearance of blockages.

High pressing force by front, adjustable handle.
Optimum adaptation to the cleaning task by 2 sleeves:
Short sleeve for wash basins and baths, long sleeve for toilets.



Info



Supply format

REMS Pull-Push. Suction and pressure cleaning device for fast clearance of blockages. With short and long sleeve. In a box.

	Art.-No.	
	170300	

REMS Mini-Cobra

Drain cleaner for manual and electric operation

Proven, handy device for the fast unblocking of pipes, e.g. for kitchens, bathrooms and toilets.

For pipes \varnothing 20 – 50 (75) mm
For drain cleaning cables \varnothing 6, 8, 10 mm

REMS Mini-Cobra – by hand or electric. Indispensable to remove small blockages.

Design

Simple, robust, practical design. Handy, light. Only 2.9 kg. Easy operation also in traps and tight bends. Easy insertion of cable directly through strainers in sinks and drains. Locking of cable by quick-action chuck.

Drain cleaning cables

Cables in high quality spring steel. Specially hardened. Highly flexible for effortless feed-forward in tight bends. Cable end with bulbous head (sink strainer head), thus easy to bend.

Cable drum

In hot-galvanized spring steel. Specially hardened. Highly flexible for effortless feed-forward in tight pipe bends. Cable end with bulbous head. Corrosion-resistant cable drum in shock-proof, glass-fibre reinforced plastic prevents pollution of the environment. Ventilation of the cable drum interior enables self-drying of cable. View to cable at all times.

Drive

By hand with easy action, easy grip crank handle or with suitable electric drill/ with suitable electric screwdriver, speed \leq 300 rpm. Hexagon adapter for electric drive located in the drum cover.



German Quality Product



Info



Supply format

REMS Mini-Cobra. Pipe cleaning device for pipes \varnothing 20 – 50 (75) mm, with crank handle and hexagonal driver for electric drill/screwdriver. For drain cleaning cables \varnothing 6, 8 and 10 mm. Cable drum in shock-proof, glass-fibre reinforced plastic. Quick-action chuck. Cable \varnothing 8 mm \times 7.5 m long. In a carton.

	Art.-No.	
	170010	

Accessories

Description	\varnothing \times Length	Art.-No.
Drain cleaning cable	8 mm \times 7.5 m	170200
	10 mm \times 10 m	170205
Drain cleaning cable with core	8 mm \times 7.5 m	170201



REMS Mini-Cobra S

Electric drain cleaning machine

Electric pipe cleaning device with fast switchover.
For effortless and quick application to remove pipe blockages in kitchen, bath, toilet.

For pipes \varnothing 20 – 50 (75) mm
For drain cleaning cables \varnothing 8, 10 mm

REMS Mini-Cobra S – Fast clearance of pipe blockages. Ultra fast reversal of direction of spiral feed/return by fast switchover.

Design

Compact unit of drive machine and cable drum. Handy, light. Only 5.7 kg. Combined thrust and grip handle for controlling the automatic feed-forward and reverse and for safe holding of the unit. Easy operation also in traps and tight bends.

Fast switchover

For easy operation and fast clearance of pipe blockages. Ultra fast reversal of direction of spiral feed/return by fast switchover (**Patent EP 3 059 022**) also under full load without changing the motor's direction of rotation, avoids looping of the drain cleaning cables when suddenly encountering resistance from pipe blockages, for long life of the drain cleaning cables.

Drain cleaning cables

Drain cleaning cables in high quality spring steel. Specially hardened. Highly flexible for effortless feed-forward in tight pipe bends. Cable end with bulbous head (sink strainer head), thus easy to bend. Drain cleaning cables with core in high quality spring steel prevents ingress of dirt and generation of long fibres in the cable windings.

Cable drum

Corrosion resistant cable drum in shock-proof, glass-fibre reinforced plastic prevents pollution of the environment. Ventilation of the cable drum interior enables self-drying of cable. View of the cable at any time.

Drive

Proven drive unit with hexagon mount. Enormously powerful. Robust, maintenance-free gear with safety slipping clutch. Universal motor, 630 W, high-torque forward and reverse at low speed. Stepless, electronic speed control. The speed between 0 and 950 rpm is controlled by pressing the tip switch steplessly (acceleration switch).



German Quality Product



Info



Patent EP 3 059 022

Supply format

REMS Mini-Cobra S. Electric pipe cleaning device with fast switchover, for pipes \varnothing 20 – 50 (75) mm. For drain cleaning cables \varnothing 8 and 10 mm. Drive unit with maintenance-free gear, universal motor 230 V or 110 V, 50 – 60 Hz, 630 W, high-torque forward and reverse at low speed. Safety tip switch. Stepless, electronic speed control (acceleration switch) between 0 and 950 rpm. Cable drum in shock-proof, glass-fibre reinforced plastic. Cable \varnothing 8 mm, with core, 7.5 m long.

Description	Art.-No.
REMS Mini-Cobra S , in a carton	170022
REMS Mini-Cobra S Set , in sturdy steel case.	170023



Accessories

Description	\varnothing × Length	Art.-No.
Drain cleaning cable with core	8 mm × 7.5 m	170201
Drain cleaning cable	10 mm × 10 m	170205
Steel case		185058



Mobile, handy, cordless pipe cleaning device with fast switchover. For effortless and quick application to remove pipe blockages in kitchen, bath, toilet. Li-Ion 22V Technology. For battery and corded operation.

For pipes	Ø 20 – 50 (75) mm
For drain cleaning cables	Ø 8, 10 mm

REMS Mini-Cobra S 22V VE – fast clearance of pipe blockages anywhere. Ultra fast reversal of direction of spiral feed/return by fast switchover. With powerful, brushless battery motor.

Design

Compact unit of cordless drive unit and spiral drum. Mobile, handy, light. Complete with battery pack only 5.2 kg. Combined thrust and grip handle for controlling the automatic feed-forward and reverse and for safe holding of the unit. Easy operation also in traps and tight bends. Integrated LED work light for illuminating the work place.

Fast switchover

For easy operation and fast clearance of pipe blockages. Ultra fast reversal of direction of spiral feed/return by fast switchover (**Patent EP 3 059 022**) also under full load without changing the motor's direction of rotation, avoids looping of the drain cleaning cables when suddenly encountering resistance from pipe blockages, for long life of the drain cleaning cables.

Drain cleaning cables

Drain cleaning cables in high quality spring steel. Specially hardened. Highly flexible for effortless feed-forward in tight pipe bends. Cable end with bulbous head (sink strainer head), thus easy to bend. Drain cleaning cables with core in high quality spring steel prevents ingress of dirt and generation of long fibres in the cable windings.

Cable drum

Corrosion resistant cable drum in shock-proof, glass-fibre reinforced plastic prevents pollution of the environment. Ventilation of the cable drum interior enables self-drying of cable. View of the cable at any time.

Drive

High-performance electro-mechanical drive with powerful, brushless motor 21.6V, 500 W output, extra torque powerful left and right hand rotation at specially adapted speed, robust, precision ball bearing-mounted gear, maintenance-free. Safety switch, electronically controlled for jolt-free switching on and off. Continuous, electronic speed control. The speed can be continuously controlled by variable pressure on the safety switch from 0 to 560 rpm (accelerator switch /VE).

Battery or mains operation

Li-Ion 22V Technology. Highly resistant Li-Ion 21.6V battery with 1.5, 4.4, 5.0 or 9.0Ah capacity, for long service life. Light and powerful. Graduated charging status check by coloured LEDs. Operating temperature range – 10 to + 60 °C. No memory effect for maximum battery power. Rapid charger 100–240V, 90W. Rapid charger 100–240V, 290W, for shorter charging times, as accessory. 220–240V/21.6V, 15A output, voltage supply for mains operation instead of Li-Ion battery 21.6V, as accessory.



German Quality Product



Info



Patent EP 3 059 022



Supply format

REMS Mini-Cobra S 22 V VE. Cordless pipe cleaning device with fast switchover, for pipes \varnothing 20–50 (75) mm. For drain cleaning cables \varnothing 8 and 10 mm. Drive unit with powerful, brushless battery motor 21.6 V, 500 W, maintenance-free, robust gear, extra torque powerful left and right hand rotation at low speeds, safety switch. Continuous, electronic speed control (accelerator switch (VE)) from 0 to 560 rpm. Battery Li-Ion 21.6 V, 2.5 Ah, rapid charger 220–240 V, 50–60 Hz, 70 W. Cable drum in shock-proof, glass-fibre reinforced plastic. Cable \varnothing 8 mm, with core, 7.5 m long.

Description	Art.-No.
REMS Mini-Cobra S 22 V VE, in a carton	170025
REMS Mini-Cobra S 22 V VE Set, in sturdy steel case	170026

Other voltages on request.

Accessories

Description	$\varnothing \times$ Length	Art.-No.
Drain cleaning cable with core	8 mm \times 7.5 m	170201
Drain cleaning cable	10 mm \times 10 m	170205
Battery Li-Ion 21.6 V, 2.5 Ah		571571
Battery Li-Ion 21.6 V, 4.4 Ah		571574
Battery Li-Ion 21.6 V, 5.0 Ah		571581
Battery Li-Ion 21.6 V, 9.0 Ah		571583
Rapid charger 100–240 V, 50–60 Hz, 90 W		571585
Rapid charger 100–240 V, 50–60 Hz, 290 W		571587
Voltage supply 220–240 V/21.6 V, 50–60 Hz, 15 A, for mains operation instead of battery Li-Ion 21.6 V.		571567
Steel case with inlay		170107

REMS Lumen 2800 22V, cordless LED flood light, see page 111



Handy, robust, compact machines for versatile use in pipe and drain cleaning. High-speed rotator with connectable cable sections. Proven technology.

For pipes	Ø 20 – 250 mm
For pipe and drain cleaning cables	Ø 8, 16, 22, 32 mm

All pipe and drain cleaning cables and tools can also be used for other makes.

REMS Cobra – clear pipe – easy and fast.
High-speed rotator with cable sections for work length up to 100 m. Effective chain knocking and milling up to 740 rpm. Closed drive spindle protects motor and drive against dirt and water.

High speed rotator with connectable cable sections
 High-speed rotator, 740 rpm (REMS Cobra 22) resp. 520 rpm (REMS Cobra 32), with cable sections for effective fast operation, e.g. during chain knocking or milling. Under difficult conditions also, e.g. roots and hard incrustations. Cable sections to be connected as needed up to 70 m (REMS Cobra 22) resp. 100 m (REMS Cobra 32) work length. No unnecessary rotating of long pipe and drain cleaning cables.

Design

Robust, practical, splash-proof. Maintenance-free. Small in size. Favourable weight, drive unit REMS Cobra 22 only 19 kg, drive unit REMS Cobra 32 only 24 kg. Machine frame made of distortion-free cast aluminium with protective covers in shock-proof plastic material. REMS Cobra 22 with holders for part spirals 16 and 22 for fixing the part spirals to the machine frame when changing spirals. Chucking system which is located outside the machine housing with straight through undivided drive spindle for the pipe and drain cleaning cable. This enables a complete seal of the machine interior against dirt and water. Connecting cable with integrated personal protection switch (PRCD). Guide hose prevents excess rotation of pipe and drain cleaning cables and pollution of the environment. Legs with rubber caps guarantee a safe, floor-protecting stand.

High-performance pipe and drain cleaning cables
 Specially hardened. Highly flexible for effortless feed-forward in tight pipe bends. Rapid action coupling for fast extension and shortening. T-groove coupling with safety lock through spring-loaded thrust pin. Manual feed-forward for sensitive operation. Standard pipe and drain cleaning cable for universal pipe and drain cleaning jobs, highly flexible, specially suited for tight or several consecutive pipe bends. Pipe and drain cleaning cable S with thicker special spring steel for very difficult to remove obstructions, e.g. root cutting. Drain cleaning cables with weather-proof and temperature resistant plastic core prevents drain cleaning cable from dirt and generation of long fibres in the cable windings. Drive through REMS Cobra 22, REMS Cobra 32 or drive machines of other makes.

Clamping jaws for cable drive

Clamping jaws in high-grade hardened steel, resistant to wear and precise fit. Instant and exact clamping and opening of pipe and drain cleaning cables allow optimum control, power transmission and operating safety. REMS Cobra 22: Choice of pipe and drain cleaning cables Ø 16 mm and 22 mm, without changing the clamping jaws. Pipe and drain cleaning cable Ø 8 mm with adapter drum 22/8 and integrated clamping jaws, as accessory. REMS Cobra 32: Choice of drain cleaning cables Ø 22 and 32 mm, without changing the clamping jaws. Drain cleaning cables Ø 16 mm with clamping jaws 16, as accessory. Pipe and drain cleaning cable Ø 8 mm with adapter drum 32/8 and integrated clamping jaws, as accessory.

Drive

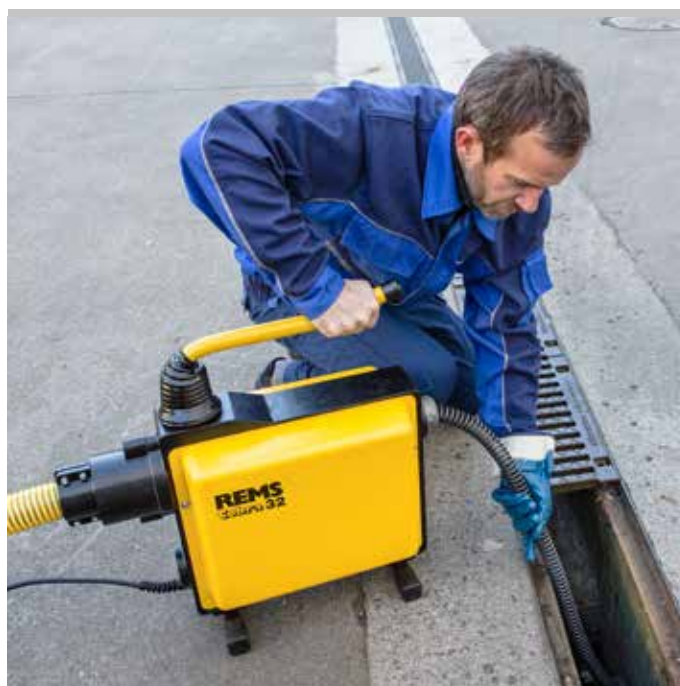
Powerful, quiet running capacitor motor with high torque, 750 W (REMS Cobra 22), 1050 W (REMS Cobra 32), right and left-hand rotation. Full transmission of motor power by a slipping-proof maintenance-free toothed belt drive. Straight through closed drive spindle. Permanently lubricated, maintenance-free roller bearings. Fast and secure run and stop of pipe and drain cleaning cable through strong, centrally located pressing lever provides central power input. Lever doubles as a carrying device without awkward locking.

Pipe and drain cleaning tools

Large variety of pipe and drain cleaning tools (page 286 – 287), also fit into pipe and drain cleaning machines of other makes.



German Quality Product



German Quality Product



Straight through closed drive spindle protects motor and drive against dirt and water.

Supply format

REMS Cobra 22 Set. Electric pipe and drain cleaning machine for pipes Ø 20–150 mm. Drive unit with maintenance-free belt drive, capacitor motor 230 V, 50 Hz, 750 W, right and left-hand rotation, guide hose. Personal protection switch (PRCD). Choice of cable and tool set 16 or/and 22. In a carton.

Description	Version	Art.-No.
Set 16	5 cable sections 16 × 2.3 m in cable carrier, straight auger 16, bulbous auger 16, toothed blade borer 16/25, cable joint separator, 1 pair of guide gloves, steel case for tool set	172010
Set 22	5 cable sections 22 × 4.5 m in cable carrier, straight auger 22, retrieving auger 22, funnel auger 22, toothed cross-blade borer 22/35, cable joint separator 22/32, 1 pair of guide gloves, steel case for tool set	172011
Set 16 + 22	5 cable sections 16 × 2.3 m in cable carrier, straight auger 16, bulbous auger 16, toothed blade borer 16/25, cable joint separator, 5 cable sections 22 × 4.5 m in cable carrier, straight auger 22, retrieving auger 22, funnel auger 22, toothed cross-blade borer 22/35, cable joint separator 22/32, 2 pairs of guide gloves, steel case for each tool set	172012



Supply format

REMS Cobra 32 Set. Electric pipe and drain cleaning machine for pipes Ø 20–250 mm (½–10"). Drive unit with maintenance-free belt drive, capacitor motor 230 V, 50 Hz, 1050 W, right and left-hand rotation, guide hose. Personal protection switch (PRCD). Choice of cable and tool set 32 or cable and tool sets 22 and 32 or 16 and 22. In a carton.

Description	Version	Art.-No.
Set 32	4 cable sections 32 × 4.5 m in cable carrier, straight auger 32, retrieving auger 32, funnel auger 32, toothed cross-blade borer 32/45, cable joint separator 22/32, 1 pair of guide gloves, case for tool set	174010
Set 22 + 32	5 cable sections 22 × 4.5 m in cable carrier, straight auger 22, retrieving auger 22, funnel auger 22, toothed cross-blade borer 22/35, cable joint separator 22/32, 4 cable sections 32 × 4.5 m in cable carrier, straight auger 32, retrieving auger 32, funnel auger 32, toothed cross-blade borer 32/45, cable joint separator 22/32. 2 pairs of guide gloves, steel case/case for each tool set	174011
Set 16 + 22	5 cable sections 16 × 2.3 m in cable carrier, 2 clamping jaws 16, straight auger 16, bulbous auger 16, toothed blade borer 16/25, cable joint separator 16, 5 cable sections 22 × 4.5 m in cable carrier, straight auger 22, retrieving auger 22, funnel auger 22, toothed cross-blade borer 22/35, cable joint separator 22/32, 2 pairs of guide gloves, steel case for each tool set	174012



Accessories

Description	Art.-No.
REMS Cobra 22 drive unit with guide hose	172000
REMS Cobra 32 drive unit with guide hose	174000

Pipe and drain cleaning tools see page 286–287.



Description	Size	Art.-No.
Cable and tool set 16 consisting of 5 cable sections 16 × 2.3 m in cable carrier, straight auger 16, bulbous auger 16, toothed blade borer 16/25, cable joint separator, 1 pair of guide gloves, steel case for tool set		172050
Cable and tool set 22 consisting of 5 cable sections 22 × 4.5 m in cable carrier, straight auger 22, retrieving auger 22, funnel auger 22, toothed cross-blade borer 22/35, cable joint separator, 1 pair of guide gloves, steel case for tool set		172051
Cable and tool set 32 consisting of 4 cable sections 32 × 4.5 m in cable carrier, straight auger 32, retrieving auger 32, funnel auger 32, toothed cross-blade borer 32/45, cable joint separator 22/32, 1 pair of guide gloves, case for tool set		174050
Adapter drum REMS Cobra 22/8 with cable Ø 8 mm × 7.5 m long, with bulbous head		170011
Adapter drum REMS Cobra 32/8 with cable Ø 8 mm × 7.5 m long, with bulbous head		170012
Clamping jaws 16 (pack of 2) for REMS Cobra 32 for clamping drain cleaning cables Ø 16 mm		174101
Pipe and drain cleaning cable for pipe-Ø 10–50 (75) mm	8 × 7.5 m	170200
for pipe-Ø 25–125 mm	16 × 2.3 m	171200
for pipe-Ø 50–150 mm	22 × 4.5 m	172200
for pipe-Ø 50–250 mm	32 × 4.5 m	174200
Pipe and drain cleaning cable (5 pieces) in cable carrier for pipe-Ø 25–125 mm	16 × 2.3 m	171201
Pipe and drain cleaning cable (5 pieces) in cable carrier for pipe-Ø 50–150 mm	22 × 4.5 m	172201
Pipe and drain cleaning cable (4 pieces) in cable carrier for pipe-Ø 50–250 mm	32 × 4.5 m	174201
Pipe and drain cleaning cable S With thick special spring steel for high stability, e.g. during root cutting, milling, chain knocking for pipe-Ø 25–125 mm	16 × 2 m	171205
for pipe-Ø 50–150 mm	22 × 4 m	172205
for pipe-Ø 50–250 mm	32 × 4 m	174205
Pipe and drain cleaning cable with core prevents clogging of pipe and drain cleaning cable with dirt for pipe-Ø 25–125 mm	16 × 2.3 m	171210
for pipe-Ø 50–150 mm	22 × 4.5 m	172210
for pipe-Ø 50–250 mm	32 × 4.5 m	174210
Pipe and drain cleaning cable with core (5 pieces) in cable carrier for pipe-Ø 50–150 mm	22 × 4.5 m	172203
Pipe and drain cleaning cable with core (4 pieces) in cable carrier for pipe-Ø 50–250 mm	32 × 4.5 m	174203
Cable reduction 22/16 for connecting individual cables of different sizes	22/16	172154
Cable reduction 32/22 for connecting individual cables of different sizes	32/22	174154
Cable carrier (empty)	16 22 32	171150 172150 174150
Cable joint separator for releasing the safety lock	16 22/32	171151 172151



Description	Size	Art.-No.
Straight auger for exploring the obstruction to withdraw a sample. Clearing of solid blockages caused by e.g. textiles, paper, kitchen waste	16 22 32	171250 172250 174250
Bulbous auger for minor obstructions caused by textiles and papers. Flexible, facilitates advancement in tight bends.	16 22 32	171265 172265 174265
Funnel auger for textile and paper obstructions in particular. Especially useful for cleaning larger diameter pipes. Also be used as a recovery tool for cables left in the pipe.	16 22 32	171270 172270 174270
Retrieving auger with extended, specially angled grappling arms. Used to recover cables left in the pipe. Not suitable for boring operations.	16 22 32	171275 172275 174275
Serrated blade borer for boring out greasy or heavily silted pipes, e.g. drains of washing machines, dishwashers. Riveted to the connector (not soldered or welded), so as to prevent any deformation of the hardened spring steel blades.	16/25 22/35 22/45 32/55	171280 172280 172281 174282
Serrated cross-blade borer Universal use for obstructions of all kinds, including incrustations, e.g. limescale deposits on the inside of the pipe. Riveted to the connector (not soldered or welded), so as to prevent any deformation of the hardened spring steel blades. Operation with pipe and drain cleaning cable S recommended.	16/25 16/35 22/35 22/45 22/65 32/45 32/65 32/90 32/115	171290 171291 172290 172291 172293 174291 174293 174295 174296
Forked cutter to remove moderate to severe silting or persistent grease contamination. Made of hardened spring steel.	16	171305
Cross-forked cutter to remove moderate to severe silting or persistent grease contamination. Made of hardened spring steel. Operation with pipe and drain cleaning cable S recommended.	16	171306
Serrated forked cutter Versatile use, e.g. for removal of slurries and for mincing (crushing) of root infested pipe. Made of hardened spring steel.	22/65 32/65 32/90	172305 174305 174306
Root cutter specially designed for root infested pipe. Hardened, replaceable ring-type saw, cutting to front and rear. Operation with pipe and drain cleaning cable S recommended.	22/65 32/65 32/90	172310 174310 174311
Chain knocker, smooth rings for final pipe and drain cleaning for removal of grease deposits and incrustations, e.g. limescale deposits on the inside of the pipe. For sensitive pipes, e.g. plastic.	16 22 32	171340 172340 174340
Chain knocker, spiked links for final pipe and drain cleaning for removal of grease deposits and incrustations, e.g. limescale deposits on the inside of the pipe. For cast and concrete pipes.	16 22 32	171341 172341 174341
Guide gloves, pair for secure gripping and guiding of pipe and drain cleaning cables		172610
Riveted guide glove, left Riveted guide glove, right for secure gripping and guiding of pipe and drain cleaning cables. Fully leather, inner surface riveted.		172611 172612

