

H.T. painted steel pipe for pellet stoves



# Nerino MP

## Description

It is a 1.2 mm thick carbon steel single-wall product with HT silicone gasket inserted.

It is a CE-marked product according to EU Regulation No. 305/2011 and complies with UNI EN 1856/2. It is available in three diameters: 80, 100 and 120 mm. External finishes include black paint (standard) and, upon request, gray or white.

It should be used in systems with operating temperatures below 200°C. Should this threshold be exceeded, it is strongly recommended to replace the silicone gasket, or to size the system under vacuum, without the use of the gaskets.

**Where not expressly stated, products in this line are intended to be sold in individual packag**

**ATTENTION: can only be installed with pellet heat generators.**

## In short

- Grey or white painting available on request with 30% increase on the price;
- It is recommended to install this product with the glass facing up (in the direction of the condensate)
- Not to be used in systems with operating temperatures exceeding 200° C;
- Only to be used with pellet heat generators.

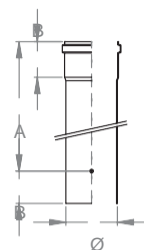


## Technical details

Diameter (mm)	80	100	120
Thickness (mm)	1,2	1,2	1,2
Internal diameter (mm)	77,6	97,6	117,6
Product classification	T200 P1 W Vm L01120 O30 with gasket T450 N1 D Vm L01120 G375NM without gasket		
Material	Painted carbon steel		
Application area	dry fumes under pressure and in depression		
Connections	50mm male/female connection with provision for seal		
Tightness	with silicone gasket for high temperatures		
Suitable fuels	pellet		
Operating temperature	continuous dry functioning under pressure up to 200° with silicone gasket for high temperatures		

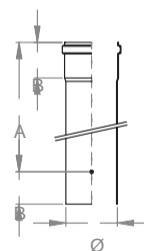
### 2000mm LENGTH

Ø	SKU	A	B	C	
80	MP020.080000	1950	50		1
100	MP020.100000	1950	50		1
120	MP020.120000	1950	50		1



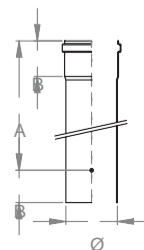
### 1500mm LENGTH

Ø	SKU	A	B	C	
80	MP015.080000	1450	50		1
100	MP015.100000	1450	50		1
120	MP015.120000	1450	50		1



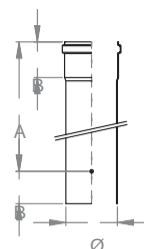
### 1000mm LENGTH

Ø	SKU	A	B	C	
80	MP060.080000	950	50		1
100	MP060.100000	950	50		1
120	MP060.120000	950	50		1



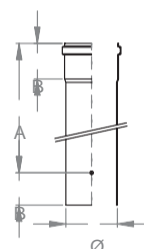
### 500mm LENGTH

Ø	SKU	A	B	C	
80	MP080.080000	450	50		1
100	MP080.100000	450	50		1
120	MP080.120000	450	50		1



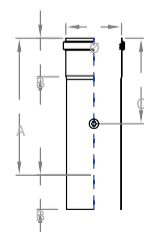
### 250mm LENGTH

Ø	SKU	A	B	C	
80	MP100.080000	200	50		1
100	MP100.100000	200	50		1
120	MP100.120000	200	50		1



### ELEMENT FOR SMOKE ANALYSIS

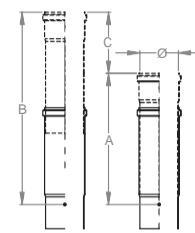
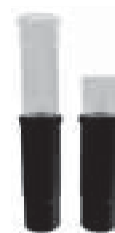
Ø	SKU	A	B	C	
80	MP505.080000	198	50	125	1
100	MP505.100000	198	50	125	1
120	MP505.120000	198	50	125	1



### TELESCOPIC ADJUSTABLE LENGTH



Ø	SKU	A	B	C	D	E	
80	MP130.080000	250	400	150	1		1
100	MP130.100000	250	400	150	1		1
120	MP130.120000	250	400	150	1		1

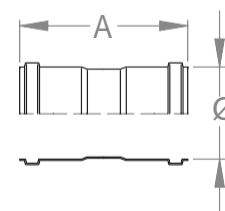


ATTENTION: This item consists of only one piece (telescoping lower part, shown here in black color).

### DOUBLE FEMALE ADAPTER



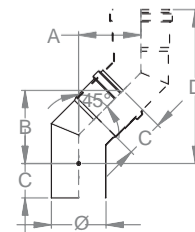
Ø	SKU	A	B	C	D	E	
80	MP150.080000	145					1
100	MP150.100000	145					1
120	MP150.120000	145					1



### 45° ELBOW



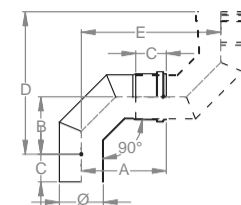
Ø	SKU	A	B	C	D	E	
80	MP200.080000	90	100	50	235		1
100	MP200.100000	96	115	50	250		1
120	MP200.120000	115	130	50	265		1



### 90° ELBOW



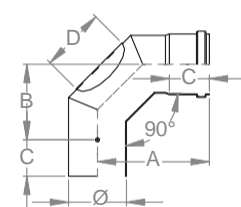
Ø	SKU	A	B	C	D	E	
80	MP220.080000	160	110	50	265	255	1
100	MP220.100000	170	120	50	277	277	1
120	MP220.120000	170	120	50	290	290	1



### 90° ELBOW WITH INSPECTION



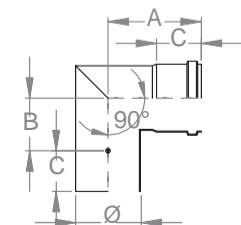
Ø	SKU	A	B	C	D	E	
80	MP223.080000	135	90	50	70		1
100	MP223.100000	147	100	50	70		1
120	MP223.120000	160	110	50	70		1



### 90° ANGLED SHAPE ELBOW



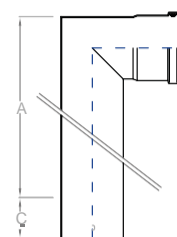
Ø	SKU	A	B	C	D	E	
80	MP221.080000	117	70	50			1
100	MP221.100000	128	80	50			1
120	MP221.120000						1



### 90° ELBOW WITH TWO INSPECTION



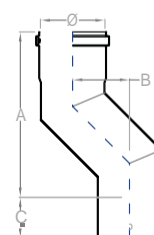
Ø	SKU	A	B	C	D	E	
80	MP222.080000	450	160	50			1
100	MP222.100000	450	180	50			1



### DISPLACEMENT ELBOW

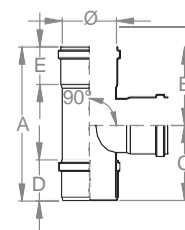


Ø	SKU	A	B	C	D	E	
80	MP240.080000	215	80	50			1
100	MP240.100000	215	80	50			1



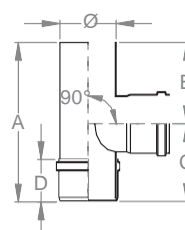
### 90° TEE F-F-M- WITH CAP

Ø	SKU	A	B	C	D	E	
80	MP252.080000	220	116	104	50	50	1
100	MP252.100000	220	114	106	50	50	1
120	MP252.120000	250	160	110	50	50	1



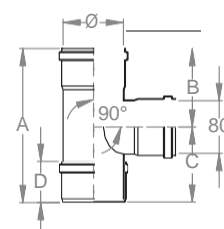
### 90° TEE M-F-M- WITH CAP

Ø	SKU	A	B	C	D		
80	MP251.080000	220	120	100	50	1	
100	MP251.100000	220	110	110	50	1	
120	MP251.120000	250	140	110	50	1	



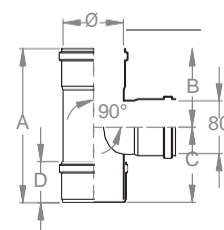
### 90° TEE WITH SILICONE CAP

Ø	SKU	A	B	C	D		
80	MP242.080000	220	116	104	50	1	



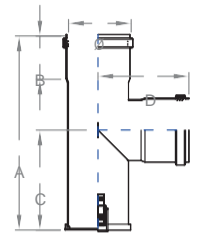
### 90° TEE WITH SILICONE CAP

Ø	SKU	A	B	C	D		
80	MP243.080000	220	116	104	50	1	



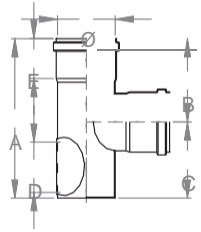
### 90° TEE WITH CLOSED CAP

Ø	SKU	A	B	C	D	E	
80	MP259.080000	247	124	123	117		1



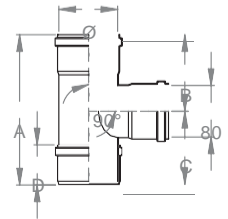
### 90° TEE INSPECTION on two sides

Ø	SKU	A	B	C	D	E	
80	MP253.080000	190	120	70	70	50	1
100	MP253.100000	220	140	80	70	50	1
120	MP253.120000	250	140	110	70	50	1



### 90° TEE REDUCED to 80 mm WITH CAP

Ø	SKU	A	B	C	D	
100	MP262.100080	220	140	80	50	50
120	MP262.120080	220	140	80	50	50



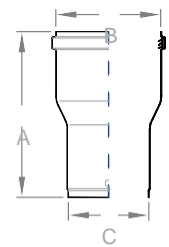
## SECTION VARIATORS

#### Section increases

Ø	SKU	A	B	C	
80 → 100	MP840.080100	163	100	80	1
80 → 120	MP840.080120	163	120	80	1
100 → 120	MP840.100120	163	120	100	1



Male Start

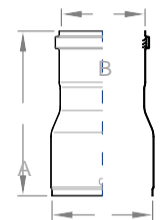


#### Section reductions

Ø	SKU	A	B	C	
100 → 80	MP850.100080	163	80	100	1
120 → 80	MP850.120080	160	80	120	1
120 → 100	MP850.120100	163	100	120	1



Male Start

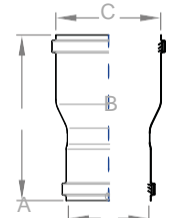


#### Female-to-Female Sectional Variators

Ø	SKU	A	B	C	
100 → 80	MP851.100080	160	100	80	1
120 → 80	MP851.120080	160	120	80	1
120 → 100	MP851.120100	165	120	100	1



Female-Female

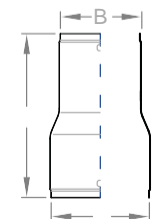


#### Male-to-Male section variators

Ø	SKU	A	B	C	
100 → 80	MP852.100080	166	80	100	1
120 → 80	MP852.120080	166	80	120	1
120 → 100	MP852.120100	166	100	120	1



Male-Male

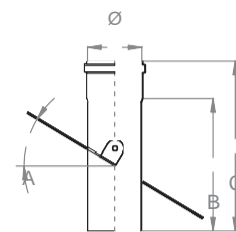
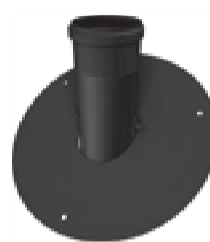


ATTENTION: If the installation is not done in the condensate direction, the seal is not guaranteed

## UNIVERSAL ADAPTER



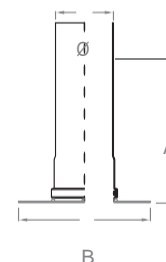
Ø	SKU	A	B	C	D	E	
80	MP696.080000	0-30°	200	250	250		1
100	MP696.100000	0-30°	200	250	270		1
120	MP696.120000	0-30°	200	250	290		1



## RETRACTABLE WALL WITH ROSE



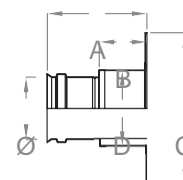
Ø	SKU	A	B	C	D	E	
80	MP700.080000	100	180				1
80	MP701.080000	100	240				1
80	MP702.080000	100	300				1
80	MP705.080000	250	180				1
80	MP706.080000	250	240				1
80	MP707.080000	250	300				1
100	MP701.100000	100	260				1
100	MP702.100000	100	320				1
100	MP706.100000	250	260				1
100	MP707.100000	250	320				1



## RETRACTABLE WALL CONNECTOR



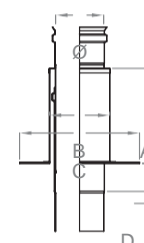
Ø	SKU	A	B	C	D	E	
80	MP699.080000	132	63	200	101		1
100	MP699.100000	132	63	220	121		1
120	MP699.120000	132	63	240	141		1



## CEILING ADJUSTABLE CONNECTOR



Ø	SKU	A	B	C	D	E	
80	MP698.080000	158	101	200	50/130		1
100	MP698.100000	158	121	220	50/130		1
120	MP698.120000	158	141	240	50/130		1

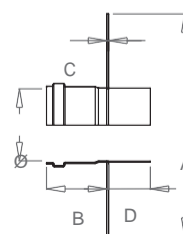


Telescopic part included

## ADAPTER WALL



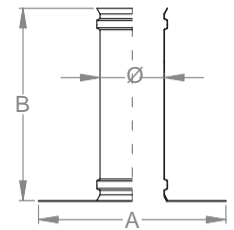
Ø	SKU	A	B	C	D	E	
80	MP686.080000	180	75	2	50		1
100	MP686.100000	180	75	2	50		1
120	MP686.120000	200	75	2	50		1



### TELESCOPIC ELEMENT SMALL ROSE COVER



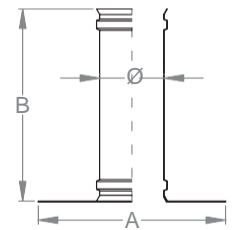
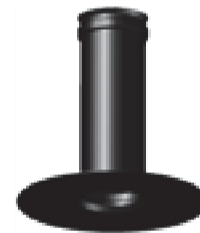
Ø	SKU	A	B	C	D	E	
80	MP694.080000	180	245				1
100	MP694.100000	180	245				1
120	MP694.120000	200	245				1



### TELESCOPIC ELEMENT WITH ROSE COVER



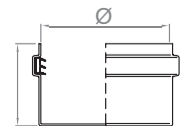
Ø	SKU	A	B	C	D	E	
80	MP695.080000	245	245				1
100	MP695.100000	245	245				1
120	MP695.120000	245	245				1



### CLOSED CUP

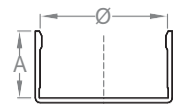
Painted iron cap

Ø	SKU	A	B	C	D	
80	MP360.080000	50				1
100	MP360.100000	50				1
120	MP360.120000	50				1



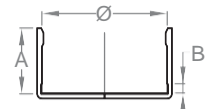
SILICONE cap (with stainless steel protection disc)

Ø	SKU	A	B	C	D	
80	MP342.080000	50				1



STAINLESS STEEL PROTECTED SILICONE Cap

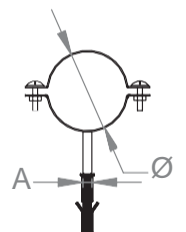
Ø	SKU	A	B	C	D	
80	MP343.080000	50	6			1



### WALL BRACKET WITH SCREW ANCHOR



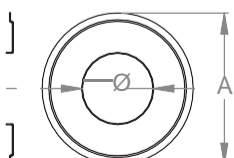
Ø	SKU	A	B	C	D	E	
80	MP470.080000	10					1
100	MP470.100000	10					1
120	MP470.120000	10					1



### ROSE COVER



Ø	SKU	A	B	C	D	E	
80	MP690.080000	176					1
100	MP690.100000	190					1
120	MP690.120000	216					1

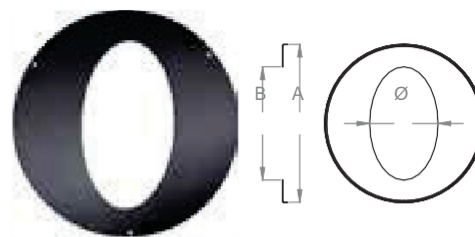


### ELLIPTIC ROSE COVER



Ø	SKU	A	B	C	D	E	
80	MP691.080000	245					1
100	MP691.100000	245					1
120	MP691.120000	245					1

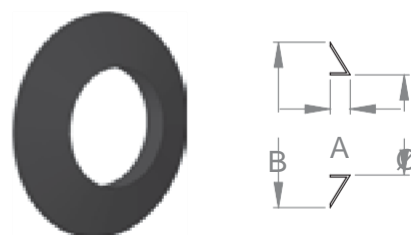
\* customer-supplied measurement



### SILICONE ROSE COVER



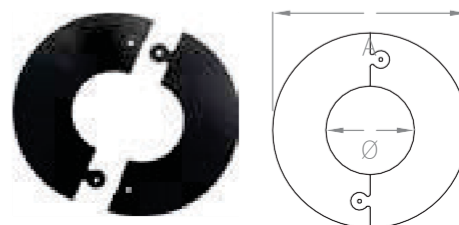
Ø	SKU	A	B	C	D	E	
80	MP692.080000	20	135				1
100	MP692.100000	20	165				1



### MODULAR ROSE COVER



Ø	SKU	A	B	C	D	E	
80	MP693.080000	180					1
100	MP693.100000	200					1
120	MP693.120000	220					1

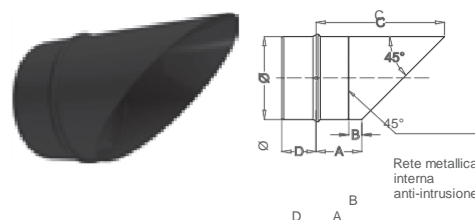


### EXHAUST WALL PIPE PAINTED BLACK



Ø	SKU	A	B	C	D	E	
80	MP565.080000	67	20	147	50		1
100	MP565.100000	67	20	167	50		1
120	MP565.120000	67	20	187	50		1

This product is made of black painted AISI 316 stainless steel.

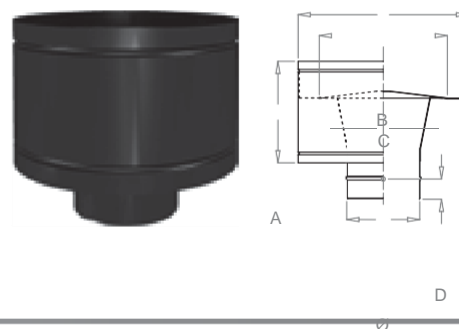


### CASK CAP BLACK PAINTED



Ø	SKU	A	B	C	D	E	
80	MP560.080000	166	160	110	50		1
100	MP560.100000	166	200	140	50		1
120	MP560.120000	166	230	165	50		1

This product is made of black painted AISI 316 stainless steel.



### MATT PAINT SPRAY CAN FOR TOUCH-UPS



Ø	SKU	€	A	B	C	D	E	
	MP990.000000	33,70						1

