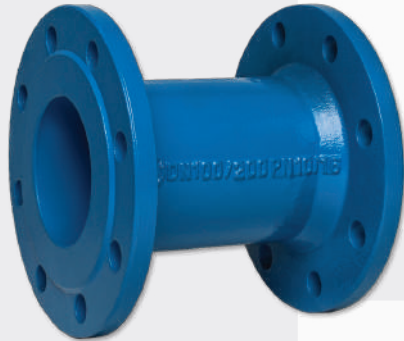


DOUBLE FLANGED PIPE series FF



TECHNICAL CHARACTERISTICS

Flange end connections according to EN1092-2

Designed according to EN545

Maximum working pressure: PN16 / 16 bar

Working temperature: 0°C - +70°C

Color RAL5015

Powder epoxy coating 250 µm thickness

Drilling of flanges: PN10/16, starting from DN200 - PN10

Body from ductile iron EN-GJS-500-7

WRAS approved epoxy coating,

ACS approved epoxy coating under request

DN	Flange drilling	L	e	Weight	BLUCAST ref. no.	DN	Flange drilling	L	e	Weight	BLUCAST ref. no.
50	PN10/16	100	7	4	FF050100	150	PN10/16	100	7.8	14	FF150100
50	PN10/16	200	7	5.5	FF050200	150	PN10/16	200	7.8	16	FF150200
50	PN10/16	300	7	7	FF050300	150	PN10/16	300	7.8	19	FF150300
50	PN10/16	400	7	8.5	FF050400	150	PN10/16	400	7.8	21	FF150400
50	PN10/16	500	7	11	FF050500	150	PN10/16	500	7.8	24	FF150500
50	PN10/16	1000	7	18	FF0501000	150	PN10/16	1000	7.8	38	FF1501000
65	PN10/16	200	7	9	FF065200	200	PN10	100	8.4	19	FF200100
65	PN10/16	300	7	10	FF065300	200	PN10	200	8.4	22	FF200200
65	PN10/16	500	7	12.7	FF065500	200	PN10	300	8.4	26	FF200300
80	PN10/16	100	7	7.7	FF080100	200	PN10	400	8.4	30	FF200400
80	PN10/16	200	7	9	FF080200	200	PN10	500	8.4	34	FF200500
80	PN10/16	300	7	11	FF080300	200	PN10	1000	8.4	54	FF2001000
80	PN10/16	400	7	12.5	FF080400	250	PN10	200	9	29	FF250200
80	PN10/16	500	7	14	FF080500	250	PN10	300	9	35	FF250300
80	PN10/16	1000	7	22.3	FF0801000	250	PN10	500	9	45	FF250500
100	PN10/16	100	7.2	8.8	FF100100	250	PN10	1000	9	72	FF2501000
100	PN10/16	200	7.2	10.5	FF100200	300	PN10	100	9.6	31	FF300100
100	PN10/16	300	7.2	12	FF100300	300	PN10	200	9.6	39	FF300200
100	PN10/16	400	7.2	14	FF100400	300	PN10	300	9.6	45	FF300300
100	PN10/16	500	7.2	15.5	FF100500	300	PN10	400	9.6	52	FF300400
100	PN10/16	1000	7.2	25	FF1001000	300	PN10	500	9.6	59	FF300500
						300	PN10	1000	9.6	93	FF3001000

