



water solutions

Data sheet

DAC 80/80V+KAF 116-2" EN (P)



General features:

- Structure in GJL-250 cast iron;
- Seal in NBR rubber;
- Epoxy-vinyl paint;
- Full free passage;
- Complete with pipe guide and coupling flange with stainless steel fasteners;
- A patented system simplifies pump release and reduces the mechanical stresses on the guide pipes.

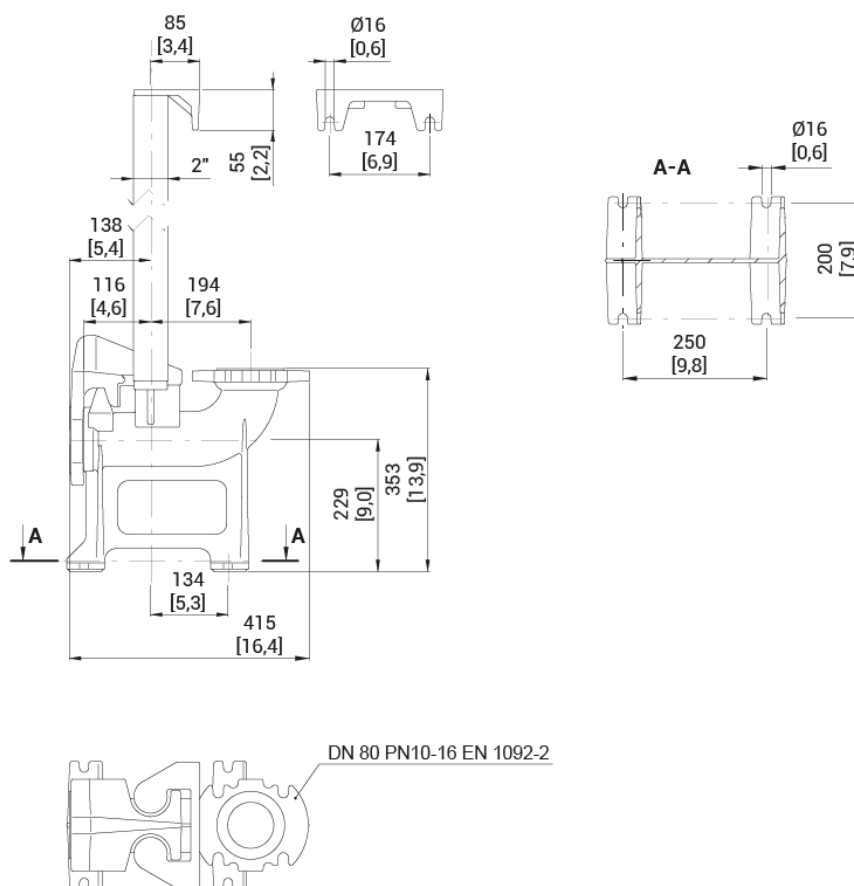


All product images are indicative only

Accessory code

9001.032

Dimensional drawing



Technical characteristics

Discharge:	DN80 EN1092-2 PN10-16
Suction:	DN80 EN1092-2 PN10-16
Coupled pump max. weight (if specified):	550 kg
Weight:	28 kg