
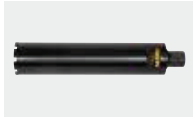
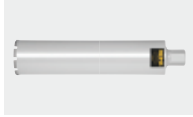






Diamond core drilling

Diamond chasing and cutting machine

Wet and dry suction

	Electric diamond core drilling machines	238
	Drill stands	246
	Universal diamond core drilling crowns	248
	Universal diamond core drilling crowns LS	249
	Tile drilling	250
	Diamond chasing and cutting machines	252
	Diamond cutting discs	253
	Dry and wet extractor	254

Compact, handy power tool for core drilling, e.g. in concrete, steel-reinforced concrete, all kinds of masonry, natural stone, asphalt, all kinds of screed. Dry or wet drilling, hand held or with drill stand. For trade and industry.

Concrete, steel-reinforced concrete $\leq \varnothing 102$ (132) mm

Masonry and other materials $\leq \varnothing 162$ mm

REMS Universal diamond core drilling crowns, also suitable for drive machines of other makes, see page 248–249.

REMS Picus S1 – Core drilling instead of chiselling. Easy, fast, vibration-free.

1 system – 4 applications.

Ideal for plumbers.

Universal use

Universal drive machine for dry or wet drilling, hand held or with drill stand. Can be used anywhere, in narrow angles, flush with the wall. For many materials. For pipeline and cable ducting, ventilation channels, test core drilling.

System advantage

Only **one** type of universal diamond core drilling crowns for all REMS Picus drive machines and other suitable makes of drive machines. Therefore simple, low cost storage. No confusion possible.

Design

Compact, handy drive machine for vibration-free core drilling, with drilling crown connecting thread UNC 1 1/4 male, BSPP 1/2 female. Robust, suitable for the building site. Extra light, only 5.2 kg. Simple, fast work, e.g. 200 mm in steel-reinforced concrete $\varnothing 62$ mm in only 3 min. Practical spade handle and stabiliser for hand held drilling. Throat $\varnothing 60$ mm for holding the drive machine in the drill stand. Water supply for wet drilling, with adjustable shut-off valve and quick-coupling with water stop and hose connection 1/2". Suction rotor for sucking off dust for dry drilling with connection for conventional vacuum cleaner, as accessory.

Drive

Robust, powerful 1850 W universal motor. Load speed drilling spindle 580 rpm. Stable, maintenance-free gear. Blocking protection by safety slip clutch. Tip switch with lock. Connecting cable with integrated personal protection switch (PRCD).

Multifunction electronics

Multifunction electronics with start-up current limiting for soft starting for delicate drilling start, automatic idle speed limiting for noise reduction and preservation of the motor, overload and blocking protection for motor and gear.

Universal diamond core drilling crowns

Universally usable for dry and wet drilling, hand held or with drill stand. Optionally REMS Universal diamond core drilling crowns, inductively soldered, resolderable or REMS Universal diamond core drilling crowns LS, laser welded, high temperature-resistant (page 248–249). Connecting thread UNC 1 1/4 female. Drilling depth

420 mm. Specially developed, high quality diamond segments with high diamond percentage and special bonding, for excellent drilling performance and very long life. Ideal for universal applications in steel-reinforced concrete and masonry. Adapter for using the REMS Universal diamond core drilling crowns in drive machines of other makes, as accessory. Light loosening ring, for light loosening of the diamond core crown, as accessory.

Dust extraction in accordance with EN 60335-2-69

When working with mineral building materials, e.g. concrete, steel-reinforced concrete, masonry and screed, a high degree of mineral dust containing quartz is produced which is harmful to the health. Inhalation of quartz fine dust is harmful to the health. EN 60335-2-69 prescribes the use of at least one safety extractor of dust class M for the extraction of health hazardous dusts with an exposure limit/work place limit of $> 0.1 \text{ mg/m}^3$. Observe the national regulations.

Suction rotor for dust extraction in dry drilling with connection for REMS Pull and other suitable extractors, as accessory. Drilling start aid G 1/2, with bores for extracting the drilling dust from the bore hole by a suction rotor for dust extraction, with carbide masonry drill $\varnothing 8$ mm, as an accessory. REMS Pull M, wet and dry dust extractor, certified for extracting health hazardous dusts of dust class M (page 254).

Water extractor unit

Water extractor unit for wet drilling up to $\varnothing 170$ mm, consisting of a water collector ring with connection for REMS Pull or other suitable wet extractors, compression ring, rubber washer $\varnothing 200$ mm, adaptable to diameter of the drill crown and universal pressure pad for all REMS drill stands, as accessory.

Drill stand

REMS Simplex 2 or REMS Titan drill stands can be used optionally (page 246).



Info



REMS Simplex 2



REMS Titan



REMS Picus S1 Basic-Pack



REMS Picus S1 Set 62

Supply format

REMS Picus S1 Basic-Pack. Electric diamond core drilling machine for core drilling in concrete, steel-reinforced concrete ≤ Ø 102 (132) mm, masonry and other materials ≤ Ø 162 mm. For dry and wet drilling, hand held or with drill stand. Drive machine with drilling crown connecting thread UNC 1¼ male, BSPP ½ female, maintenance-free gear with safety slip clutch, universal motor 230 V, 50–60 Hz, 1850 W. Multifunction electronics with soft starting, idle speed limiting, overload protection, blocking protection. Touch switch with lock. Personal protection switch (PRCD). Load speed drilling spindle 580 rpm. Water supply device with adjustable shut-off valve and quick coupling with water stop and ½" hose connection. Stabiliser. Starting aid BSPP ½ with drill Ø 8 mm, Allen key size 3. Single open-ended wrench size 32. In sturdy steel case.

	Art.-No.	
	180010	

Other voltages on request.

Supply format

REMS Picus S1 Set 62. REMS Picus S1 Basic-Pack with REMS Universal diamond core drilling crown UDKB Ø 62 mm.

	Art.-No.	
	180020	

Other voltages on request.

Supply format

REMS Picus S1 Set 62 Simplex 2. REMS Picus S1 Basic-Pack with REMS Universal diamond core drilling crowns UDKB Ø 62 mm a REMS Simplex 2 drilling stand including tools and fastening kit for masonry and concrete.

	Art.-No.	
	180031	

Other voltages on request.



REMS Picus S1 Set 62 Simplex 2

Accessories

Description	Art.-No.	
REMS Picus S1 drive unit	180000	
Steel case with inlay	180600	
REMS Universal diamond core drilling crowns, inductively soldered, resolderable, see page 248.		
REMS universal diamond core drilling crowns LS, laser welded, high temperature-resistant, see page 249.		
REMS Pull L / M, dry and wet extractors, see page 254		
Additional accessories see page 246–247.		



Powerful, handy power tool for core drilling, e.g. in concrete, steel-reinforced concrete, all kinds of masonry, natural stone, asphalt, all kinds of screed. Dry or wet drilling, hand held or with drill stand. For trade and industry.

Concrete, steel-reinforced concrete	≤ Ø 152 (200) mm
Masonry and other materials	≤ Ø 250 mm

REMS Universal diamond core drilling crowns, also suitable for drive machines of other makes, see page 248–249.

REMS Picus S3 – Core drilling instead of chiselling. Easy, fast, vibration-free.

1 system – 4 applications.

Ideal for plumbers.

Universal use

Universal drive machine for dry or wet drilling, hand held or with drill stand. Can be used anywhere, in narrow angles, flush with the wall. Extremely versatile and efficient, e.g. drilling in steel-reinforced concrete, masonry and other materials. For pipeline and cable ducting, ventilation channels, test core drilling.

System advantage

Only **one** type of universal diamond core drilling crowns for all REMS Picus drive machines and other suitable makes of drive machines. Therefore simple, low cost storage. No confusion possible.

Design

Compact, handy drive machine for vibration-free core drilling, with drilling crown connecting thread UNC 1 1/4 male, BSPP 1/2 female. Robust, suitable for the building site. Only 7.4 kg. Simple, fast work, e.g. 200 mm in steel-reinforced concrete Ø 62 mm in only 3 min. Practical spade handle and stabiliser for hand held drilling. Throat Ø 60 mm for holding the drive machine in the drill stand. Water supply for wet drilling, with adjustable shut-off valve and quick-coupling with water stop and hose connection 1/2". Suction rotor for sucking off dust for dry drilling with connection for conventional vacuum cleaner, as accessory.

Drive

Robust, powerful 2200 W universal motor. Stable, maintenance-free 3-speed gear for optimum selection of load speed according to the drilling diameter. Load speed drilling spindle 530 rpm, 1280 rpm, 1780 rpm. Blocking protection by safety slip clutch. Tip switch with lock. Connecting cable with integrated personal protection switch (PRCD).

Multifunction electronics

Multifunction electronics with start-up current limiting for soft starting for delicate drilling start, automatic idle speed limiting for noise reduction and preservation of the motor, overload and blocking protection for motor and gear.

Universal diamond core drilling crowns

Universally usable for dry and wet drilling, hand held or with drill stand. Optionally REMS Universal diamond core drilling crowns, inductively soldered, resolderable or REMS Universal diamond core drilling crowns LS, laser welded, high temperature-resistant (page 248–249). Connecting thread UNC 1 1/4 female. Drilling depth

420 mm. Specially developed, high quality diamond segments with high diamond percentage and special bonding, for excellent drilling performance and very long life. Ideal for universal applications in steel-reinforced concrete and masonry. Adapter for using the REMS Universal diamond core drilling crowns in drive machines of other makes, as accessory. Light loosening ring, for light loosening of the diamond core crown, as accessory.

Dust extraction in accordance with EN 60335-2-69

When working with mineral building materials, e.g. concrete, steel-reinforced concrete, masonry and screed, a high degree of mineral dust containing quartz is produced which is harmful to the health. Inhalation of quartz fine dust is harmful to the health. EN 60335-2-69 prescribes the use of at least one safety extractor of dust class M for the extraction of health hazardous dusts with an exposure limit/work place limit of > 0.1 mg/m³. Observe the national regulations.

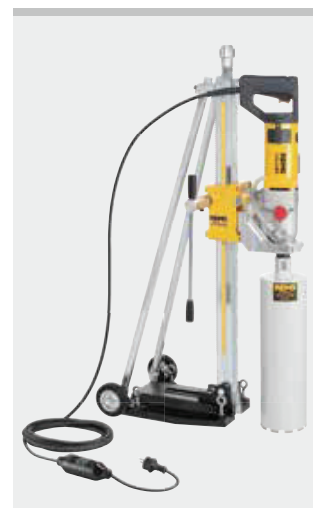
Suction rotor for dust extraction in dry drilling with connection for REMS Pull and other suitable extractors, as accessory. Drilling start aid G 1/2, with bores for extracting the drilling dust from the bore hole by a suction rotor for dust extraction, with carbide masonry drill Ø 8 mm, as an accessory. REMS Pull M, wet and dry dust extractor, certified for extracting health hazardous dusts of dust class M (page 254).

Water extractor unit

Water extractor unit for wet drilling up to Ø 170 mm, consisting of a water collector ring with connection for REMS Pull or other suitable wet extractors, compression ring, rubber washer Ø 200 mm, adaptable to diameter of the drill crown and universal pressure pad for all REMS drill stands, as accessory.

Drill stand

REMS Simplex 2 or REMS Titan drill stands can be used optionally (page 246).



Info



REMS Simplex 2



REMS Titan



REMS Picus S3 Basic-Pack



REMS Picus S3 Set Titan

Supply format

REMS Picus S3 Basic-Pack. Electric diamond core drilling machine for core drilling in concrete, steel-reinforced concrete ≤ Ø 152 (200) mm, masonry and other materials ≤ Ø 250 mm. For dry and wet drilling, hand held or with drill stand. Drive machine with drilling crown connecting thread UNC 1¼ male, BSPP ½ female, maintenance-free 3-speed gear with safety slip clutch, universal motor 230 V, 50–60 Hz, 2200 W. Multifunction electronics with soft starting, idle speed limiting, overload protection, blocking protection. Touch switch with lock, personal protection switch (PRCD). Load speed drilling spindle 530 rpm, 1280 rpm, 1780 rpm. Water supply with adjustable shut-off valve and quick-coupling with water stop and hose connection ½". Stabiliser. Starting aid BSPP ½, Allen key size 3. Single open-ended wrench size 32. In sturdy steel case.

	Art.-No.	
	180011	

Other voltages on request.

Supply format

REMS Picus S3 Set Titan. REMS Picus S3 Basic-Pack with REMS Titan drilling stand including fastening kit for masonry and concrete.

	Art.-No.	
	180029	

Other voltages on request.

Supply format

REMS Picus S3 Set 62-82-132 Titan. REMS Picus S3 Basic-Pack with REMS Universal diamond core drilling crowns UDKB Ø 62-82-132 mm and REMS Titan drilling stand including fastening kit for masonry and concrete.

	Art.-No.	
	180028	

Other voltages on request.



REMS Picus S3 Set 62-82-132 Titan

Accessories

Description	Art.-No.	
REMS Picus S3 drive unit	180001	
Steel case with inlay	180600	
REMS Universal diamond core drilling crowns, inductively soldered, resolderable, see page 248.		
REMS universal diamond core drilling crowns LS, laser welded, high temperature-resistant, see page 249.		
REMS Pull L / M, dry and wet extractors, see page 254		
Additional accessories see page 246–247.		



Compact, handy power tool for core drilling, e.g. in concrete, steel-reinforced concrete, all kinds of masonry, natural stone, asphalt, all kinds of screed. With speed regulation. Dry or wet drilling, hand held or with drill stand. For trade and industry.

Concrete, steel-reinforced concrete	≤ Ø 162 (200) mm
Masonry and other materials	≤ Ø 250 mm

REMS Universal diamond core drilling crowns, also suitable for drive machines of other makes, see page 248–249.

REMS Picus SR – Core drilling instead of chiselling.
Easy, fast, vibration-free.
With speed regulation.

1 system – 4 applications.
Ideal for plumbers.

Universal use

Universal drive machine for dry or wet drilling, hand held or with drill stand. Can be used anywhere, in narrow angles, flush with the wall. Extremely versatile and efficient, e.g. drilling in steel-reinforced concrete, masonry and other materials. For pipeline and cable ducting, ventilation channels, test core drilling.

System advantage

Only **one** type of universal diamond core drilling crowns for all REMS Picus drive machines and other suitable makes of drive machines. Therefore simple, low cost storage. No confusion possible.

Design

Compact, handy drive machine for vibration-free core drilling, with drilling crown connecting thread UNC 1 1/4 male, BSPP 1/2 female. Robust, suitable for the building site. Extra light, only 6.4 kg. Simple, fast work, e.g. 200 mm in steel-reinforced concrete Ø 62 mm in only 3 min. Practical spade handle and stabiliser for hand held drilling. Throat Ø 60 mm for holding the drive machine in the drill stand. Spacer set for additional stabilisation of the REMS Picus SR drive unit on the REMS Titan drill stand. Water supply for wet drilling, with adjustable shut-off valve and quick-coupling with water stop and hose connection 1/2".

Drive

Robust, powerful 2200 W universal motor. Overheating protection by temperature monitoring of the motor's field winding with a PTC resistor (Positive Temperature Coefficient). Stable, maintenance-free, 2-step gear. Blocking protection by safety slip clutch. Tip switch with lock. Connecting cable with integrated personal protection switch (PRCD).

Speed-Regulation

Stepless electronic speed regulation of the drive machine for selecting the speed according to the material. The speed is steplessly adjustable on the dial: 250 rpm to 500 rpm (1st gear) or 600 rpm to 1200 rpm (2nd gear). The electronic speed control that is being used keeps the selected speed constant, also under load. The speed of the drilling crown is kept at the nominal value until it meets with resistance and drops below a critical value. The drive motor stops. When the load on the drive unit is relieved again, the drill runs back up to nominal speed so that work can continue immediately at nominal speed (**Patent EP 2 085 191**). Advantage: The optimum drilling speed (load speed) selected for the respective material and the drilling crown diameter remains constant for the entire duration of the drilling. For the best drilling performance and maximum life of the drilling crowns.

Multifunction electronics

Multifunction electronics with start-up current limiting for soft starting for delicate drilling start, automatic idle speed limiting for noise reduction and preservation of the motor, overload and blocking protection for motor and gear.

Universal diamond core drilling crowns

Universally usable for dry and wet drilling, hand held or with drill stand. Optionally REMS Universal diamond core drilling crowns, inductively soldered, resolderable or REMS Universal diamond core drilling crowns LS, laser welded, high temperature-resistant (page 248–249). Connecting thread UNC 1 1/4 female. Drilling depth 420 mm. Specially developed, high quality diamond segments with high diamond percentage and special bonding, for excellent drilling performance and very long life. Ideal for universal applications in steel-reinforced concrete and masonry. Adapter for using the REMS Universal diamond core drilling crowns in drive machines of other makes, as accessory. Light loosening ring, for light loosening of the diamond core crown, as accessory.

Dust extraction in accordance with EN 60335-2-69

When working with mineral building materials, e.g. concrete, steel-reinforced concrete, masonry and screed, a high degree of mineral dust containing quartz is produced which is harmful to the health. Inhalation of quartz fine dust is harmful to the health. EN 60335-2-69 prescribes the use of at least one safety extractor of dust class M for the extraction of health hazardous dusts with an exposure limit/work place limit of > 0.1 mg/m³. Observe the national regulations.

Patent EP 2 085 191



Tested by electrosuisse >>

German Quality Product



Info

With speed regulation for the best drilling performance and maximum life of the drilling crowns.



REMS Simplex 2



REMS Titan

REMS Picus SR

Electric diamond core drilling machine
with speed regulation

Suction rotor for dust extraction in dry drilling with connection for REMS Pull and other suitable extractors, as accessory. Drilling start aid G ½, with bores for extracting the drilling dust from the bore hole by a suction rotor for dust extraction, with carbide masonry drill Ø 8 mm, as an accessory. REMS Pull M, wet and dry dust extractor, certified for extracting health hazardous dusts of dust class M (page 254).

Drill stand

REMS Simplex 2 or REMS Titan drill stands can be used optionally (page 246).

Water extractor unit

Water extractor unit for wet drilling up to Ø 170 mm, consisting of a water collector ring with connection for REMS Pull or other suitable wet extractors, compression ring, rubber washer Ø 200 mm, adaptable to diameter of the drill crown and universal pressure pad for all REMS drill stands, as accessory.



REMS Picus SR Basic-Pack



REMS Picus SR Set Titan

Supply format

REMS Picus SR Basic-Pack. For core drilling in concrete, steel-reinforced concrete ≤ Ø 162 (200) mm, masonry and other materials ≤ Ø 250 mm. For dry or wet drilling, hand held or with drill stand. Drive machine with drilling crown connection thread UNC 1¼ male, G ½ female, maintenance-free 2-step gear with safety slip clutch, universal motor 230 V, 50–60 Hz, 2200 W. Stepless electronic speed regulation 250 rpm to 500 rpm (1st gear) or 600 rpm to 1200 rpm (2nd gear), overheating protection. Multifunction electronics with soft starting, idle speed limiting, overload protection, blocking protection. Touch switch with lock. Personal protection switch (PRCD). Water supply device with adjustable shut-off valve and quick coupling with water stop and ½" hose connection. Stabiliser. Spacer set. Single open ended wrench size 32. In sturdy steel case.

	Art.-No.	
	183010	

Other voltages on request.

Supply format

REMS Picus SR Set Titan. REMS Picus SR Basic-Pack with REMS Titan drilling stand including fastening kit for masonry and concrete.

	Art.-No.	
	183022	

Other voltages on request.

Supply format

REMS Picus SR Set 62-82-132 Titan. REMS Picus SR Basic-Pack with REMS Titan drilling stand including fastening kit for masonry and concrete and REMS Universal diamond core drilling crowns UDKB Ø 62-82-132 mm.

	Art.-No.	
	183023	

Other voltages on request.

Accessories

Description	Art.-No.	
REMS Picus SR drive unit	183000	
Spacer set for additional stabilisation of the REMS Picus SR drive unit on the REMS Titan drill stand, consisting of spacer and 2 cylinder head screws M 8 × 65	183632	
Steel case with inlay	180600	
REMS Universal diamond core drilling crowns , inductively soldered, resolderable, see page 248.		
REMS universal diamond core drilling crowns LS , laser welded, high temperature-resistant, see page 249.		
REMS Pull L / M , dry and wet extractors, see page 254		
Additional accessories see page 246–247.		



Powerful, robust core drilling machine for core drilling, e.g. in concrete, steel-reinforced concrete, all kinds of masonry, natural stone, asphalt, all kinds of screed. Dry or wet drilling with drill stand. For installation, metalwork, industry.

Concrete, steel-reinforced concrete, masonry and other materials Ø 40–300 mm

REMS Universal diamond core drilling crowns, also suitable for drive machines of other makes, see page 248–249.

REMS Picus S2/3,5 – Core drilling instead of chiselling. Easy, fast, vibration-free.

Universal use

Universal drive machine for dry or wet drilling, hand held or with drill stand. Can be used anywhere, in narrow angles, flush with the wall. Extremely versatile and efficient, e.g. drilling in steel-reinforced concrete, masonry and other materials. For pipeline and cable ducting, ventilation channels, test core drilling.

System advantage

Only **one** type of universal diamond core drilling crowns for all REMS Picus drive machines and other suitable makes of drive machines. Therefore simple, low cost storage. No confusion possible.

Design

Compact, handy drive machine for vibration-free core drilling, with drilling crown connecting thread UNC 1 1/4 male. Light loosening ring, for light loosening of the diamond core crowns. Compact, robust, suitable for the building site. Weight just 14.4 kg. Simple, fast work, e.g. 200 mm in steel-reinforced concrete Ø 62 mm in only 2 min. Clamping plate for fast clamping to the drill stand. Water supply for wet drilling, with adjustable shut-off valve and quick coupling with water stop and hose connection 1/2".

Drive

Robust, powerful 3420 W universal motor. Stable, maintenance-free 2-speed gear for optimum selection of load speed according to the drilling diameter. Load speed drilling spindle 320 rpm, 760 rpm. Blocking protection by safety slip clutch. Rocker switch. Connecting cable with integrated personal protection switch (PRCD).

Multifunction electronics

Multifunction electronics with start-up current limiting for soft starting for delicate drilling start, automatic idle speed limiting for noise reduction and preservation of the motor, overload and blocking protection for motor and gear.

Universal diamond core drilling crowns

Universally usable for dry and wet drilling, hand held or with drill stand. Optionally REMS Universal diamond core drilling crowns, inductively soldered, resolderable or REMS Universal diamond core drilling crowns LS, laser welded, high temperature-resistant (page 248–249). Connecting thread UNC 1 1/4 female. Drilling depth 420 mm. Specially developed, high quality diamond segments with high diamond percentage and special bonding, for excellent drilling performance and very long life. Ideal for universal applications in steel-reinforced concrete and masonry. Adapter for using the REMS Universal diamond core drilling crowns in drive machines of other makes, as accessory. Light loosening ring, for light loosening of the diamond core crown, as accessory.

Water extractor unit

Water extractor unit for wet drilling up to Ø 170 mm, consisting of a water collector ring with connection for REMS Pull or other suitable wet extractors, compression ring, rubber washer Ø 200 mm, adaptable to diameter of the drill crown and universal pressure pad for all REMS drill stands, as accessory.

Drill stand REMS Titan

Robust, highly stable drilling stand for core drilling in steel-reinforced concrete and other materials up to Ø 300 mm. For high demands. Drill column made of rigid, unbendable square precision steel tube \varnothing 50 mm, with extra narrow tolerance, for low-vibration guiding of the slide. Continuously tiltable with degree scale up to 45°, with double support by adjustable, single-part steel girders, for maximum thrust pressure. Highly stable, 3-sided guidance of the drill column in the base plate and triple cross fastening for high rigidity in vertical drilling. 4 Eyebolts for levelling unevenness of the floor, for exact standing position. Drill depth scale. Slide guided on all sides by adjustable, pretensioned plastic slide bearings. Precision in-feed drive ensures easy, low-vibration drilling and precise, low-vibration drill thrust. For high thrust pressure and long life of the drilling crowns. Spirit level integrated in the slide for exact alignment of the drill stand. Locking of the slide for simple assembly of the drilling crown and safe transport. Rigid connection plate made of wear-resistant spheroidal iron. Quick-clamping device for accommodating drive units with a suitable connection plate. Highly stable clamping bracket, unbendable and rigid, for accommodating drive units with Ø 60 mm clamping throat. Rack and pinion force transmission with ergonomically designed pressing lever which can be inserted in both sides of the slide. Wide steel rack. Base plate with groove for sealing ring of the vacuum fastening. Vacuum fastening as accessory. Drill column with adjustable clamping head for clamping the drill stand between the ceiling and floor or between two walls. Mobile drill stand for easy transport. Weight 19.5 kg.

With tools, consisting of Allen key size 6, single open ended wrench size SW 19 and SW 30 and fastening kit for masonry and concrete, consisting of 2 M12 splaying anchors, 10 M12 hammer anchors for concrete, setting iron for M12 hammer anchors, cord threaded bar M12 x 52, quick clamping nut, washer, carbide masonry drill Ø 15 mm SDS-plus, in box.



Info



REMS Titan

Supply format

REMS Picus S2/3,5 Basic-Pack. Electric diamond core drilling machine for core drilling in concrete, steel-reinforced concrete, all kinds of masonry, natural stone, asphalt, all kinds of screed, Ø 40–300 mm. For dry and wet drilling with drill stand. Drive machine with drilling crown connecting thread UNC 11/4 male, maintenance-free 2-speed gear with safety slip clutch, universal motor 230 V, 50–60 Hz, 3420 W. Multifunction electronics with soft starting, idle speed limiting, overload protection, blocking protection. Touch switch with lock. Personal protection switch (PRCD). Load speed drilling spindle 320 rpm, 760 rpm. Water supply device with adjustable shut-off valve and quick coupling with water stop and hose connection 1/2". Light loosening ring. Single open-ended wrench size 32. In a carton.

	Art.-No.	
	180012	

Other voltages on request.



Supply format

REMS Picus S2/3,5 Set Titan. REMS Picus SR/3.5 Basic-Pack with REMS Titan drilling stand including fastening kit for masonry and concrete.

	Art.-No.	
	180030	

Other voltages on request.



Accessories

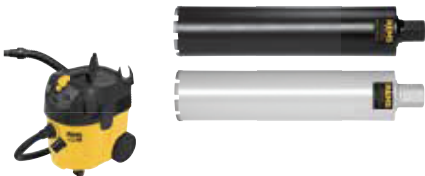
Description

REMS Universal diamond core drilling crowns, inductively soldered, resolderable, see page 248.

REMS universal diamond core drilling crowns LS, laser welded, high temperature-resistant, see page 249.

REMS Pull L / M, dry and wet extractors, see page 254

Additional accessories see page 246–247.



Drill stands

Accessories for REMS Picus S1, REMS Picus S3, REMS Picus SR, REMS Picus S2/3,5 and other makes

Supply format

REMS Simplex 2. Robust, handy drilling stand for core drilling up to Ø 200 mm. Drill column made of rigid, unbendable square precision steel tube \varnothing 50 mm, with extra narrow tolerance, for low-vibration guiding of the slide. Drilling column guided in sturdy stand and double bolted for high rigidity during drilling. Steel section stand. 4 Set screws for levelling unevenness of the floor, for exact standing position. Clamping bracket for holding drive machines with clamping throat Ø 60 mm. Slide guided on all sides by adjustable, pretensioned plastic slide bearings. Precision in-feed drive ensures easy, low-vibration drilling and precise, low-vibration drill thrust. For high thrust pressure and long life of the drilling crowns. Spirit level integrated in the slide for exact alignment of the drill stand. Locking of the slide for simple assembly of the drilling crown and safe transport. Stable clamping bracket, unbendable and rigid, for accommodating drive units with Ø 60 mm clamping throat. Rack and pinion force transmission with ergonomically designed pressing lever which can be inserted in both sides of the slide. Wide steel rack Weight 12 kg.

With tools comprising Allen key size 6, single open ended wrench size SW 19 and SW 30 and fastening kit for masonry and concrete, consisting of 2 M12 splaying anchors, 10 M12 hammer anchors for concrete, setting iron for M12 hammer anchors, cord threaded bar M12 x 52, quick clamping nut, washer, carbide masonry drill Ø 15mm SDS-plus in box.

For REMS Picus S1, REMS Picus S3, REMS Picus SR and other makes.

	Art.-No.	
	183700	



Supply format

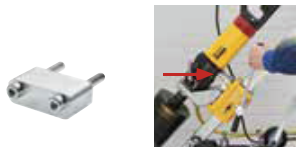
REMS Titan. Robust, highly stable drilling stand for core drilling in steel-reinforced concrete and other materials up to Ø 300 mm. For high demands. Drill column made of rigid, unbendable square precision steel tube \varnothing 50 mm, with extra narrow tolerance, for low-vibration guiding of the slide. Continuously tiltable with degree scale up to 45°, with double support by adjustable, single-part steel girders, for maximum thrust pressure. Highly stable, 3-sided guidance of the drill column in the base plate and triple cross fastening for high rigidity in vertical drilling. 4 Eyebolts for levelling unevenness of the floor, for exact standing position. Drill depth scale. Slide guided on all sides by adjustable, pretensioned plastic slide bearings. Precision in-feed drive ensures easy, low-vibration drilling and precise, low-vibration drill thrust. For high thrust pressure and long life of the drilling crowns. Spirit level integrated in the slide for exact alignment of the drill stand. Locking of the slide for simple assembly of the drilling crown and safe transport. Rigid connection plate made of wear-resistant spheroidal iron. Quick-clamping device for accommodating drive units with a suitable connection plate. Highly stable clamping bracket, unbendable and rigid, for accommodating drive units with Ø 60 mm clamping throat. Rack and pinion force transmission with ergonomically designed pressing lever which can be inserted in both sides of the slide. Wide steel rack. Base plate with groove for sealing ring of the vacuum fastening. Vacuum fastening as accessory. Drill column with adjustable clamping head for clamping the drill stand between the ceiling and floor or between two walls. Mobile drill stand for easy transport Weight 19.5 kg.

With tools comprising Allen key size 6, single open ended wrench size SW 19 and SW 30 and fastening kit for masonry and concrete, consisting of 2 M12 splaying anchors, 10 M12 hammer anchors for concrete, setting iron for M12 hammer anchors, cord threaded bar M12 x 52, quick clamping nut, washer, carbide masonry drill Ø 15mm SDS-plus in box.

System advantage: For REMS Picus S1, REMS Picus S3, REMS Picus SR, REMS Picus S2/3,5 and other makes. Use spacer set (see below) when using with REMS Picus SR.

	Art.-No.	
	183600	

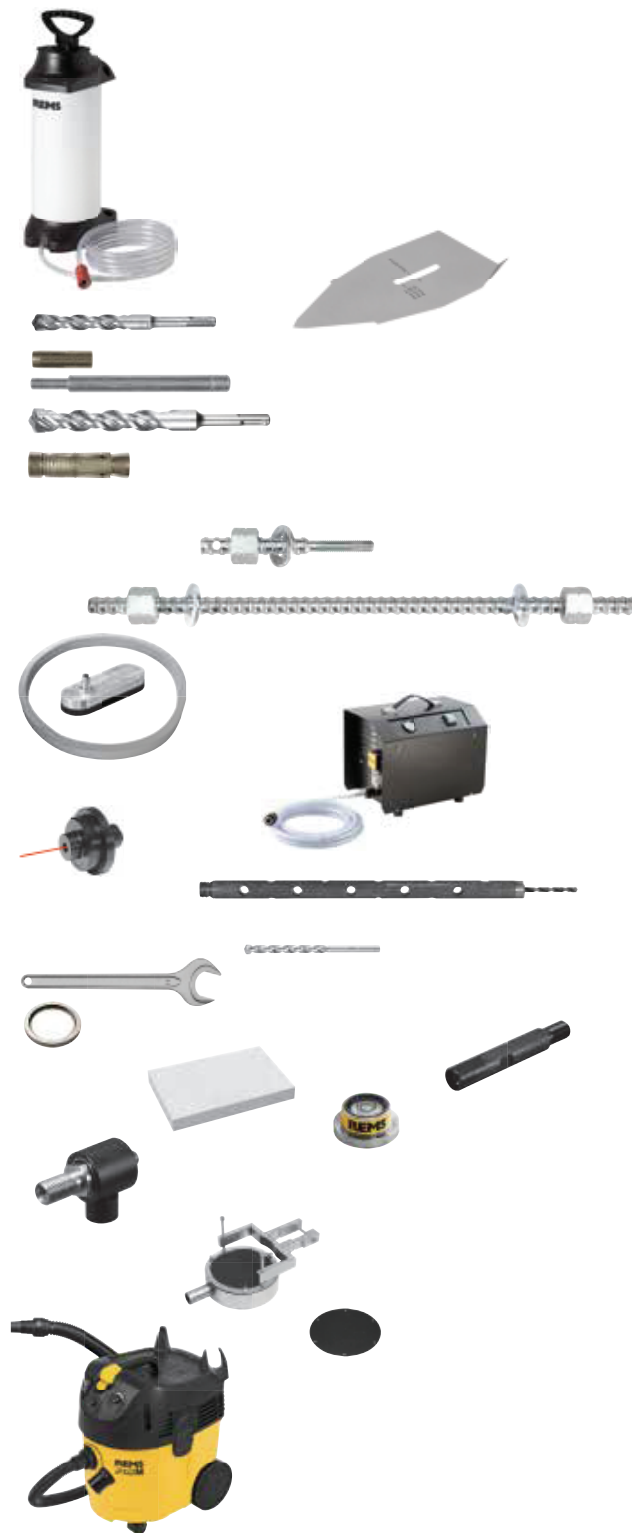
Description	Art.-No.	
Spacer set for additional stabilisation of the REMS Picus SR drive unit on the REMS Titan drill stand, consisting of spacer and 2 cylinder head screws M 8 x 65	183632	



Accessories

For REMS Picus S1, REMS Picus SR, REMS Picus S3, REMS Picus S2/3,5 and other makes

Description	Art.-No.	
Water pressure tank for 10 ltr of water, for wet drilling without water connection	182006	
Titan drilling template for easy setting of the fastening holes. For REMS Titan drilling stand.	183605	
Carbide masonry drills Ø 15 mm SDS-plus for hammer anchors M12	079018	
Hammer anchor M12 (pack of 50) , for concrete	079005	
Setting iron for hammer anchor M12	182050	
Carbide masonry drill Ø 20 mm SDS-plus for splaying anchors M12	079019	
Splaying anchor M12 (pack of 10) , for masonry, reusable	079006	
Quick clamping set 160 for fastening the drilling stand with anchors, consisting of cord threaded bar 160 mm with M12 × 52 thread, quick clamping nut, washer.	079010	
Quick clamping set 500 for fastening the drilling stand without anchor, consisting of cord threaded bar 500 mm, 2 quick clamping nuts, 2 washers	183607	
Titan vacuum fastening , consisting of cover plate with nipple for 3/8" screw connection and sealing ring for base plate.	183603	
Vacuum pump , for vacuum ≤ -900 mbar (90%), consisting of dry running rotary slide pump, oil-free, performance 6 m ³ /h, condenser motor 230 V, 50–60 Hz, 250 W, splash water-protected, inside suction filter with silencer function and 5 m PVC fabric hose with bayonet coupling.	183670	
Laser drilling centre pointer	183604	
Drilling start aid G ½ , with bores for extracting the drilling dust from the bore hole by a suction rotor for dust extraction (Art. No. 181160 R), with carbide masonry drill Ø 8 mm	180140	
Carbide masonry drill Ø 8 mm for drilling aid	079013	
Single open ended wrench size 41 for loosening the universal diamond core drilling crowns	079003	
Light loosening ring , for light loosening of the diamond core crown	180015	
Drilling crown extension 200 mm	180155	
Sharpening stone for diamond core drilling crowns	079012	
Circular spirit level , magnetic, for aligning the drill stand	182010	
Suction rotor for dust extraction with G ½ male connecting thread, UNC 1 ¼ male connecting thread and with connection for REMS Pull and other suitable extractors.	180160	
Water suction device , for wet drilling up to Ø 170 mm, consisting of water collection ring with pressure ring, rubber washer Ø 200 mm and universal pressure pad for all REMS drilling stands.	183606	
Rubber washer Ø 200 mm (pack of 10) , for water suction device	183675	
REMS Pull L / M , dry and wet extractor, certified as extractor and dust extractor for extracting health hazardous dusts in accordance with EN 60335-2-69, see page 254		



REMS Universal diamond core drilling crowns

For REMS Picus S1, REMS Picus SR, REMS Picus S3, REMS Picus S2/3,5 and other makes

High quality universal diamond core drilling crowns. Inductively soldered. Universally usable for dry and wet drilling, hand held or with drill stand. Ideal for universal applications in steel-reinforced concrete, masonry and many types of material. For installation, metalwork, industry.

Concrete, steel-reinforced concrete, all kinds of masonry, natural stone, asphalt, all kinds of screed and other Ø 32–300 mm

REMS Universal diamond core drilling crowns – Inductively soldered. Diamond segments with conical cut for fast, easy and quiet drilling. Versatile for many types of material.

Ideal for plumbers.

Universally usable for many materials, for dry and wet drilling, hand held or with drill stand.

Single connecting thread UNC 1¼ female. Drilling depth 420 mm.

Specially developed, high quality diamond segments with high diamond percentage and special bonding, for excellent drilling performance and very long life. Ideal for universal applications in steel-reinforced concrete and masonry.

Diamond segments with conical cut ("roof shape") for fast, easy and quiet drilling. Inductively soldered on fully automatic soldering machines for constant high quality of the soldered connection. Drilling tubes with soldered diamond segments can be resoldered by simple hard soldering.

Light loosening ring, for light loosening of the diamond core crowns, as accessory.

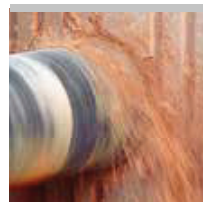
Drive through all REMS Picus drive machines and suitable drive machines of other makes having connecting thread UNC 1¼ male. Adapter for using REMS Universal diamond core drilling crowns in drive machines having other connecting threads, as accessory.



German Quality Product



info



Supply format

REMS Universal diamond core drilling crown. Inductively soldered, resolderable. Universally usable for dry and wet drilling, hand held or with drill stand.

For many materials, e.g. concrete, steel-reinforced concrete, all kinds of masonry, natural stone, asphalt, all kinds of screed. Connecting thread UNC 1¼ female. Drilling depth 420 mm. In a carton.

Ø × drilling depth × connection	Number of segments	Art.-No.
UDKB 32 × 420 × UNC 1¼	4	181010
UDKB 42 × 420 × UNC 1¼	4	181015
UDKB 52 × 420 × UNC 1¼	5	181020
UDKB 62 × 420 × UNC 1¼	6	181025
UDKB 72 × 420 × UNC 1¼	7	181030
UDKB 82 × 420 × UNC 1¼	7	181035
UDKB 92 × 420 × UNC 1¼	8	181040
UDKB 102 × 420 × UNC 1¼	8	181045
UDKB 112 × 420 × UNC 1¼	9	181050
UDKB 125 × 420 × UNC 1¼	10	181057
UDKB 132 × 420 × UNC 1¼	11	181060
UDKB 152 × 420 × UNC 1¼	12	181065
UDKB 162 × 420 × UNC 1¼	12	181070
UDKB 182 × 420 × UNC 1¼	12	181075
UDKB 200 × 420 × UNC 1¼	12	181080
UDKB 225 × 420 × UNC 1¼	13	181085
UDKB 250 × 420 × UNC 1¼	14	181090
UDKB 300 × 420 × UNC 1¼	22	181095



Accessories

Description	Art.-No.
Light loosening ring, for light loosening of the diamond core crown	180015
Drilling crown extension 200 mm	180155
Adapter UNC 1¼ male – G ½ male	180052
Adapter UNC 1¼ male – G ½ female	180056
Adapter UNC 1¼ male – Hilti BI	180053
Adapter UNC 1¼ male – Hilti BU	180054
Adapter UNC 1¼ male – Würth	180055
Sharpening stone for diamond core drilling crowns	079012
Single open ended wrench size 41 for UDKB	079003

Additional adapters for using REMS Universal diamond core drilling crowns LS in drive machines of other makes, on request.



REMS Universal diamond core drilling crowns LS

For REMS Picus S1, REMS Picus SR, REMS Picus S3, REMS Picus S2/3,5 and other makes

High quality universal diamond core drilling crowns. Laser welded. Universally usable for dry and wet drilling, hand held or with drill stand. Ideal for universal applications in steel-reinforced concrete, masonry and many types of material. For installation, metalwork, industry.

Concrete, steel-reinforced concrete, all kinds of masonry, natural stone, asphalt, all kinds of screed and other Ø 32–200 mm

REMS universal diamond core drilling crowns LS – laser welded. Diamond segments with conical cut for fast, easy and quiet drilling. Versatile for many types of material.

Ideal for plumbers.

Universally usable for many materials, for dry and wet drilling, hand held or with drill stand.

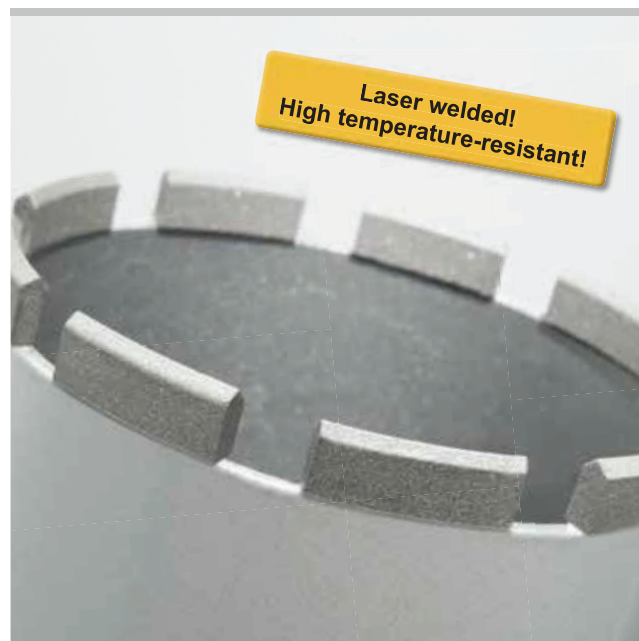
Single connecting thread UNC 1¼ female. Drilling depth 420 mm.

Specially developed, high quality diamond segments with high diamond percentage and special bonding, for excellent drilling performance and very long life. Ideal for universal applications in steel-reinforced concrete and masonry.

Diamond segments with conical cut ("roof shape") for fast, easy and quiet drilling. Inductively soldered on fully automatic soldering machines for constant high quality of the soldered connection. Drilling tubes with soldered diamond segments can be resoldered by simple hard soldering.

Light loosening ring, for light loosening of the diamond core crowns, as accessory.

Drive through all REMS Picus drive machines and suitable drive machines of other makes having connecting thread UNC 1¼ male. Adapter for using REMS Universal diamond core drilling crowns LS in drive machines having other connecting threads, as accessory.



info



Supply format

REMS Universal diamond core drilling crown. Laser welded! High temperature-resistant! Universally usable for dry and wet drilling, hand held or with drill stand. For many materials, e.g. concrete, steel-reinforced concrete, all kinds of masonry, natural stone, asphalt, all kinds of screed. Connecting thread UNC 1¼ female.

Drilling depth 420 mm. In a carton.

Ø × drilling depth × connection	Number of segments	Art.-No.
UDKB LS 32 × 420 × UNC 1¼	1	181410
UDKB LS 42 × 420 × UNC 1¼	4	181415
UDKB LS 52 × 420 × UNC 1¼	5	181420
UDKB LS 62 × 420 × UNC 1¼	6	181425
UDKB LS 72 × 420 × UNC 1¼	6	181430
UDKB LS 82 × 420 × UNC 1¼	7	181435
UDKB LS 92 × 420 × UNC 1¼	8	181440
UDKB LS 102 × 420 × UNC 1¼	9	181445
UDKB LS 112 × 420 × UNC 1¼	9	181450
UDKB LS 125 × 420 × UNC 1¼	10	181457
UDKB LS 132 × 420 × UNC 1¼	10	181460
UDKB LS 152 × 420 × UNC 1¼	11	181465
UDKB LS 162 × 420 × UNC 1¼	12	181470
UDKB LS 182 × 420 × UNC 1¼	13	181475
UDKB LS 200 × 420 × UNC 1¼	14	181480

Accessories

Description	Art.-No.
Light loosening ring, for light loosening of the diamond core crown	180015
Drilling crown extension 200 mm	180155
Adapter UNC 1¼ male – G ½ male	180052
Adapter UNC 1¼ male – G ½ female	180056
Adapter UNC 1¼ male – Hilti BI	180053
Adapter UNC 1¼ male – Hilti BU	180054
Adapter UNC 1¼ male – Würth	180055
Sharpening stone for diamond core drilling crowns	079012
Single open ended wrench size 41 for UDKB	079003

Additional adapters for using REMS Universal diamond core drilling crowns LS in drive machines of other makes, on request.

