

# MANIFOLD CONNECTION

## OPTIONAL EQUIPMENT

### OPERATION

The ESBE series KGT and KGR consists of connectors to be used at installation of ESBE circulation units on an ESBE manifold. The series KGT is specifically designed to be used in combination with ESBE Circulation unit GFA. The series KGR is designed to be used for all other ESBE circulation units. All packages consist of 2 connectors and 4 gaskets for a fast and simple installation.

### VERSIONS



**ESBE Series KGR110**  
Connections between manifold and circulation unit

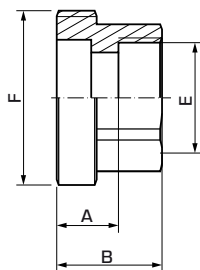
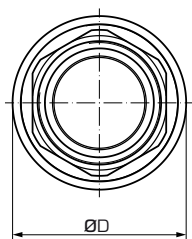


**ESBE Series KGT110**  
Connections between manifold and circulation unit GFA (Fixed temperature)

### PRODUCT ASSORTMENT

#### ESBE Manifold connection

Art. No.	Reference	No. of connection/ package	Connections		A	B	D	Weight [kg]	Note
			To system E	From Heat source F					
6610 01 00	KGT111	2	Rp 1"	G 1½"	17	29	48	0.31	For Circulation unit GFA100
6610 02 00	KGR111	2			23	35	48	0.35	



### TECHNICAL DATA



Visit [esbe.eu](http://esbe.eu) for further detailed information.

#### Technical data:

Pressure class: \_\_\_\_\_ PN 10  
Media temperature: \_\_\_\_\_ max. +110°C  
\_\_\_\_\_ min. 0°C  
Connections: \_\_\_\_\_ 1½" External thread, ISO 228/1  
\_\_\_\_\_ 1" Internal thread, EN 10226-1

#### Material, in contact with water:

Components of: \_\_\_\_\_ Brass  
Sealings material of: \_\_\_\_\_ PTFE