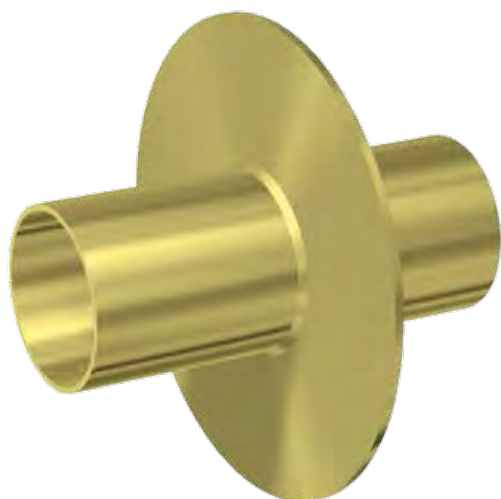


Curaflex® 9000

against pressing or non-pressing water

- opening for penetrations
- for buildings **yet to be constructed**
- for **waterproof concrete** (white tank)
- for **high static load**



Product benefits

- steel, for high static loads
- the inside face of the sleeve provides an optimum contact surface for the elastomer of the Curaflex® gasket insert
- for buildings without tanking membranes

25
Years
Guarantee

Technical details

- gas-tight
- can be used in conjunction with all Curaflex® gasket inserts
- 100 mm circumferential middle flange made of steel (can be welded at any point)
- middle flange can be used as an bonding or wall flange

Material:

- steel, electro-galvanised, yellow passivated and sealant coated;
optionally made of stainless steel grade 304 (1.4301) or grade 316 (1.4571/1.4404)

Accessories from page 88

pipe external diameter from - to	NB pipe sleeve [mm]	middle flange diameter D ₃ max. [mm]	standard length L ₁ [mm]
1 - 40	80	290	200 240 250 300 350 365 400 500
41 - 57	100	310	
58 - 77	125	330	
78 - 104	150	360	
105 - 145	200	410	
146 - 190	250	460	
191 - 233	300	510	
234 - 288	350	560	
289 - 339	400	610	
340 - 380	450	660	
381 - 430	500	710	
431 - 530	600	810	
531 - 620	700	910	
We supply pipe sleeves in more sizes. Please call: 01952 510050			

