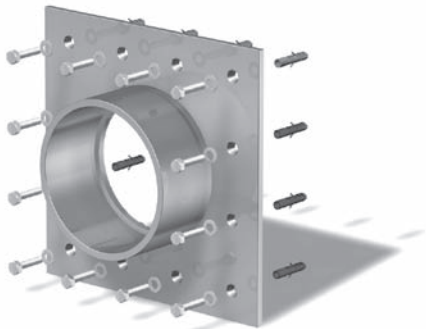
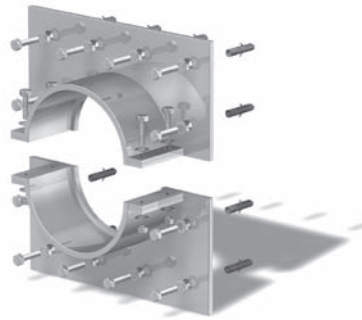


Fitting notes for „Sealing on the face of walls”

- Curaflex® pipe sleeves 8000 and 8000/T



Curaflex® 8000



Curaflex® 8000/T

Curaflex® 8000 and Curaflex® 8000/T are pipe sleeves for sealing

- waterproof walls (= white tank), e.g. waterproof concrete against pressing or non-pressing water
- constructions with bituminous thick coating (= black tank) against non-pressing water/humidity (not according to DIN 18195-9). Requires sanded version of pipe sleeve.

Curaflex® 8000/T is the pipe sleeve version in split form for retrofit installation (reconstruction) when services are already installed.

Scope of delivery:

- Curaflex® pipe sleeve (sanded version if used with thick coating)
- Fixing materials
- Special fitting set (only with pipe sleeve in split version = 8000/T)
- Fabric inlay (only with sanded sleeves needed for thick coating)
- Fitting notes

Important:

- For sealing pipes in sleeves we highly recommend to use Curaflex® gaskets*
- Installation of sleeves in split form requires additional accessories*
 - Curaflex® 1749 (Sika Cleaner) – to degrease steel pipe sleeve (can contains 1/3 litre for 0.75 m²)
 - Curaflex® 1750 (Sika Primer) – to pretreat wall (can contains 1/3 litre for 0.75 m²)
 - Curaflex® 1751 (Sikaflex 11FC+) – to seal between sleeve and wall and between sleeve parts (cartridge contains 300 ml for 0.24 m²)

Preconditions for fitting

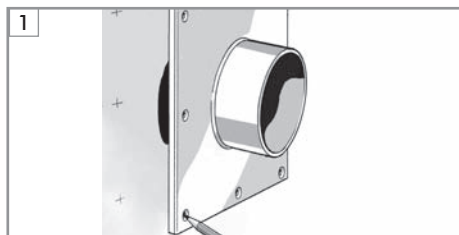
- The wall surface in this area must be clean, plain, dust-free and dry.
- The wall surface should not have any groove or damage.
- The pipe sleeve should be clean, dust- and fat-free.
- If a pipe sleeve is standing in the wall, it must be flush with the wall.
- The diameter of the core bore must not be bigger than the sleeve of the steel-plate. Otherwise a special design is required.
- If the line is not positioned centrally to the steel sleeve, a special design could be necessary according to an agreement with DOYMA.

Please note:

Doyma products are always subject to further development. Technical modifications are made without prior notice.

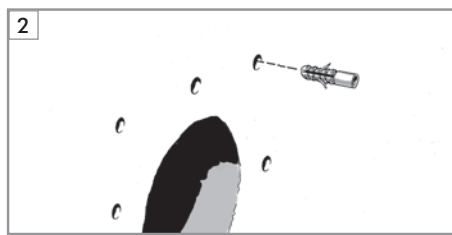
* to be ordered extra

Curaflex® pipe sleeve 8000

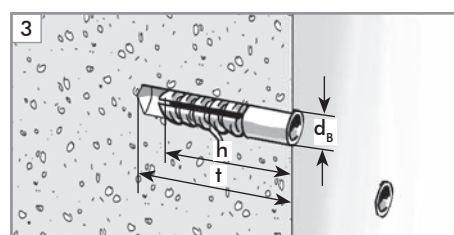


Position sleeve and mark where to screw down the fixed flange.

Important: If pipe is already installed, make sure the sleeve will be in a position centric to the pipe.



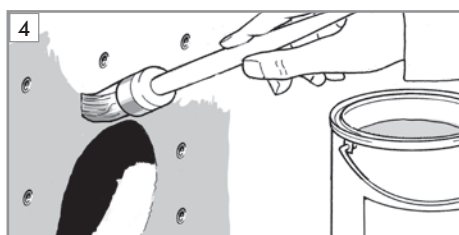
Set drills and dowels.



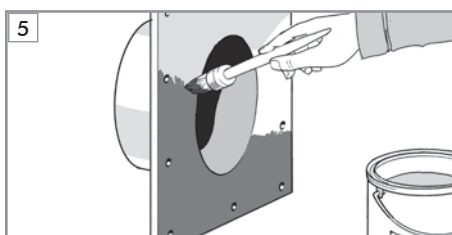
Minimum depth for drill hole $t \geq 70$ mm

Dowel length $h = 50$ mm

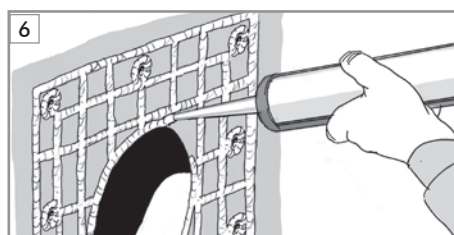
Bore dia. $d_b = 10$ mm.



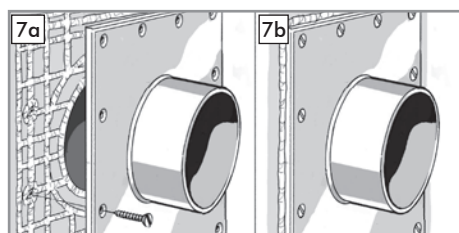
Apply Sika primer (Accessory Curaflex® 1750) to the wall where the sleeve will be fixed.



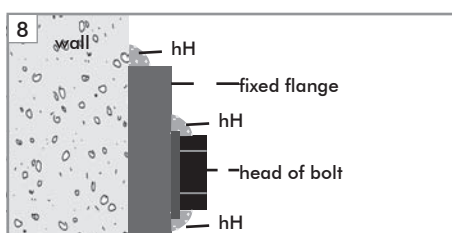
Degrease the rear of the metal plate with Sika cleaner (Accessory 1749). Use either brush or cloth.



Apply Sikaflex adhesive (Accessory Curaflex® 1751) to the wall. Make sure to apply it generously and continuously in a spiderweb pattern.

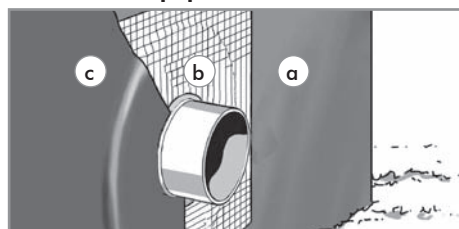


Mount fixed flange to the wall. Please note: When sufficiently applied, adhesive should ooze out of all edges and bore holes.



Important: hH = places where adhesive should ooze out.

Curaflex® pipe sleeve 8000 when used with thick bituminous coating



Step 1- 8 as shown above

- Apply first layer of KMB coating (KMB = synthetically modified bituminous coating) (a) in the area to be sealed and on the sanded fixed flange. When doing so, please observe the guidelines for applying KMB coating.
- Position and push the fabric inlay (b) in the thick-coating in the area around the penetration.
- Apply second layer of KMB coating (c).

Important: When using KMB coating, plate must be fixed to the wall by using countersunk bolts.