

Einbauhinweise für Dichtungseinsätze

Fitting notes for gasket inserts

Instructions de montage des
éléments d'étanchéité

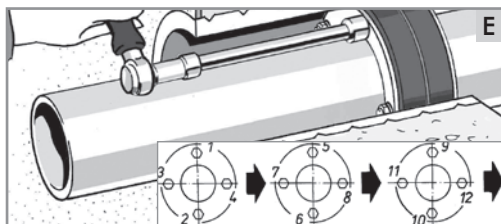
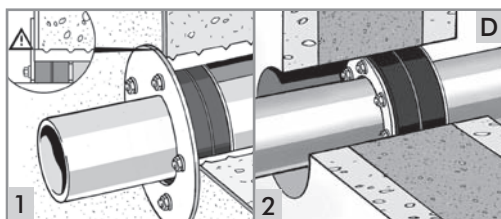
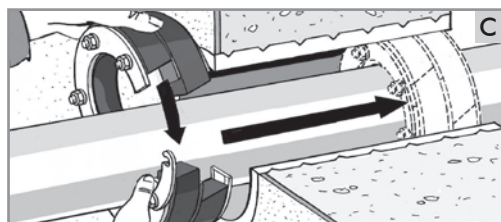
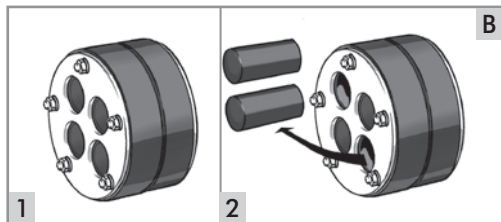
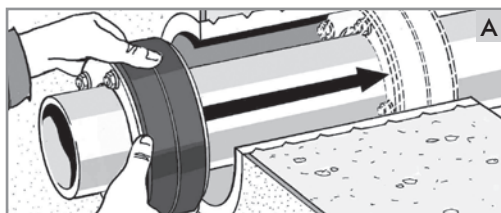


Curaflex®

- A, B, C, D, E, F
- A 40, B 40
- C 40, D 40
- E 40, F 40
- .../M
- .../O

Curaflex® Quick In

- A, B, C, D, E, F
- A 40, B 40
- C 40, D 40
- E 40, F 40



General

- Curaflex® gasket inserts are maintenance-free. Once correctly installed it's not necessary to re-tighten the bolts.
- Compare the pipe and pipe-sleeve/core bore diameter with the data on the box or gasket insert.
- Gasket inserts are not fixed points and are not designed for load bearing, they only serve to provide elastic sealing of service ducts.
- Small axial movements of the service ducts are acceptable.
- Sealing core bores : We recommend to protect the inside of the core bore with Aquagard (primer 1710/1711 and special paint 1715/1716).

A: Fitting Curaflex® gasket inserts

Gasket inserts should be aligned with the clamping nuts towards the "dry side", and as close as possible to the "water side".

B: Fitting Curaflex® gasket inserts for multiple ducts

- 1: Gasket insert Curaflex C/M with rubber cores in position
- 2: Remove rubber core before installation of pipe/cable starts

C: Fitting Curaflex® Quick In gasket inserts

Open quick closure, put gasket insert around the pipe and close with the quick closure.

D: Positioning Curaflex® gasket inserts with large ring

- 1: For Curaflex® gasket inserts with large ring (Curaflex® gasket inserts B, D, E and F) ensure that the large ring is installed close to the wall. Curaflex® D and F gasket inserts are to be installed at the pressure-exposed side.
- 2: Partition walls with double elements: Gasket insert must be positioned in cast-in-place concrete.

E: Final fitting

For final fitting of the gasket insert tighten the nuts alternately in a cross pattern by a few turns each time considering a maximum torque value as per figures given.

Warning! On thin-walled or foam-coated plastic pipes lower tightening forces are required on the nuts. Otherwise the pipes can be damaged.

Sample for recommendation: Seal KG pipes with Curaflex® gaskets A - F in core bore NB 200 by tightening screws with a torque value of 5 Nm max.

Seal KG pipes with Curaflex® gaskets A40 - F40 in core bore NB 150 by tightening screws with a torque value of 3 Nm max.

■ DOYMA allows a 25 years guarantee!
For more information see www.doyma.co.uk.

Maximale Drehmomente / max. torque values / couples de rotation max.			
Bolzen-Ø Bolt-Ø écrou-Ø	Schlüssel- weite wrench size surplat	Curaflex® Dichtungseinsatz, Curaflex® gasket insert, Curaflex® éléments d'étanchéité	
		A - F Quick In A - Quick In F A/O - F/O A/M - F/M	A 40 - F 40 Quick In A 40 - Quick In F 40 A/M/T - F/M/T
M 5	8	3 Nm	2 Nm
M 6	10	8 Nm	5 Nm
M 8	13	12 Nm	7 Nm
M 10	17	25 Nm	15 Nm
M 12	19	30 Nm	18 Nm

When several rows of bolts are used, first tighten the nuts on the inner bolt row.



DOYMA GmbH & Co

Durchführungssysteme

Industriestr. 43-57

D-28876 Oyten

Fon: 04207/9166-300

Fax: 04207/9166-199

www.doyma.de

info@doyma.de

1000236-00/09.10

