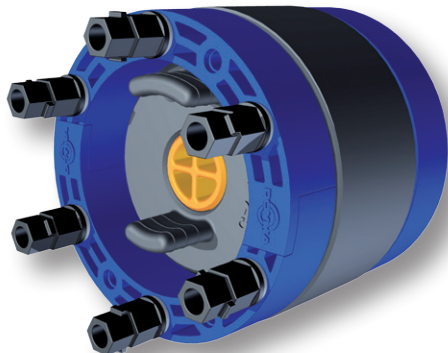
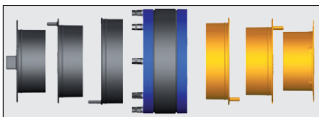


Installation instructions for Curaflex Nova® gasket inserts

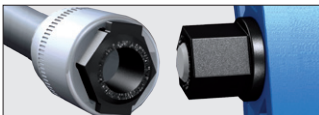


Curaflex Nova® gasket inserts fit many different diameters. The sealing insert is adapted to the pipe / cable to be sealed by removing the rubber modules (DDE). The modules to be removed are shown in the table below:



DDE: Doyma Diameter Extension

Plug-in modules make flexible adjustment of the gasket insert to different service pipe and cable diameters possible and the practical pull-tabs simplify tool-free removal

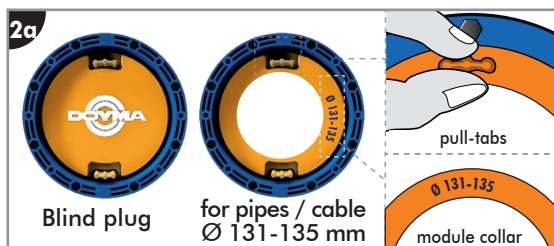
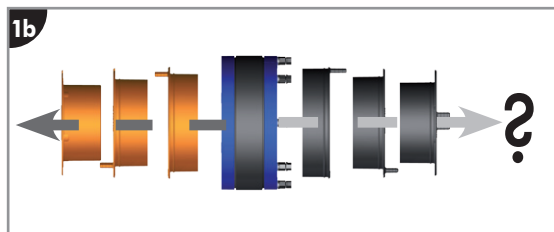
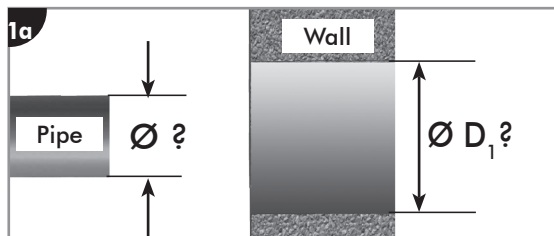
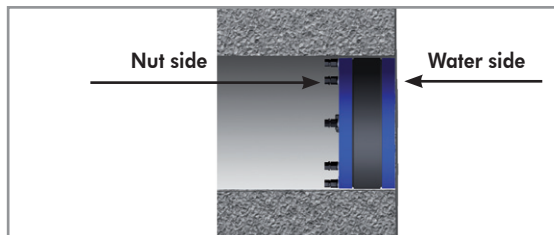


ITL: Integrated Torque Limiter

ITL automatically ensures the optimum sealing pressure, every time, to provide reliable sealing of the service medium.

Gasket insert	media pipe diameter/ printing on module collar	removable modules
Curaflex Nova® 100 NB for pipes/cable 20 - 63 mm diameter (core bore/sleeve NB 99 - 104 mm)	blind	none
	20 - 25	Blind plug
	28 - 35	Blind plug + Module (20 - 25)
	40 - 45	Blind plug + Module (20 - 25) + Module (28 - 35)
	46 - 52	Blind plug + Module (20 - 25) + Module (28 - 35) + Module (40 - 45)
	57 - 63	all
Curaflex Nova® 200 NB for pipes/cable 108 - 160 mm diameter (core bore/sleeve NB 199 - 203 mm)	blind	none
	108 - 112	Blind plug
	113 - 118	Blind plug + Module (108 - 112)
	124 - 128	Blind plug + Module (108 - 112) + Module (113 - 118)
	131 - 135	Blind plug + Module (108 - 112) + Module (113 - 118) + Module (124 - 128)
	139 - 144	Blind plug + Module (108 - 112) + Module (113 - 118) + Module (124 - 128) + Module (131 - 135)
	156 - 160	all

Table: Adjustment of Curaflex Nova® to suit media diameter



General installation instructions for the gasket insert

- ❑ Is the gasket insert suitable? Compare media pipe / cable diameter and sleeve / core bore diameter with the data in the table.
- ❑ The nuts of the gasket insert should point away from the wet end of the duct.
- ❑ Push the gasket insert as far as practicable to the outside (water side) of the building.
- ❑ Clicking sounds when tightening the shear nuts indicate correct locking of the ring halves. They are not warning signals!
- ❑ When correctly installed, Curaflex Nova® gaskets are maintenance free.
- ❑ Gasket inserts are not anchor fixings; they function solely as elastic seals for pipes and cables.
- ❑ Small axial movements of pipes and cables are permitted.
- ❑ Sealing thin-walled and / or foamed plastic pipes must be checked. Please contact us if in doubt.

1 Measuring

a) Measure the diameter of the core bore or sleeve and the service pipe or cable

Size range for core bores / sleeves:

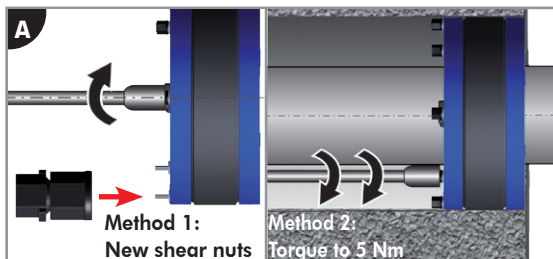
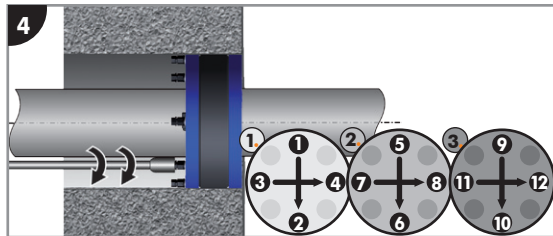
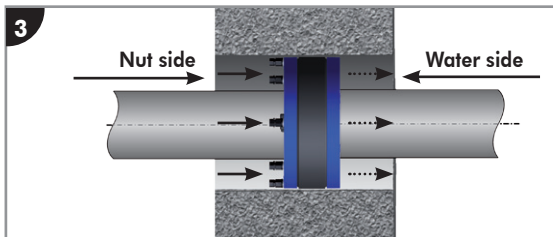
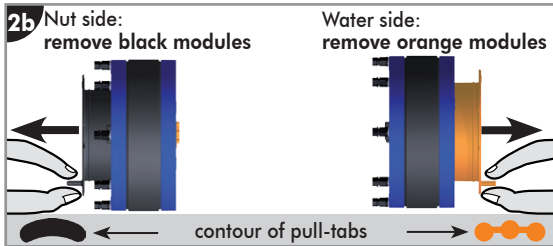
100 NB gasket insert: diameter D1 99 - 104 mm

200 NB gasket insert: diameter D1 199 - 203 mm

b) Refer to the table (see page 1) to see which modules to remove to seal the pipe / cable.

2 Adapting the gasket insert to fit the service diameter

Starting with the blind plug (water side), remove modules from **alternate sides** (nut side – water side) using the pull-tabs **until the required size (embossed on the module collar) is revealed**. If too many modules are accidentally removed, simply re-insert the modules back into the correct side.



3 Installing the gasket insert

Push the Curaflex Nova® over the service pipe / cable and into the core bore / sleeve until the gasket insert is approximately flush with the outer face of the wall (water side)*.

NB! Twin wall / cavity wall constructions: Generally, the gasket insert should be positioned in the construction forming the water barrier. Please contact us if in doubt.

4 Tightening

Progressively tighten opposite nuts (M10 socket) a few turns at a time. Finally, continue torquing opposites until the shear portion breaks away (ITL principle: Integrated torque limiter requires no special tool).

Accessoires:

- Stabiliser Kit: Comprises 4 stabilising lugs with screws
Item No.: 1 88 0 600 004 2 9
- Nuts set: Comprises 8 shear nuts M6 (ITL-principle)
Item No.: 1 88 0 600 008 0 0

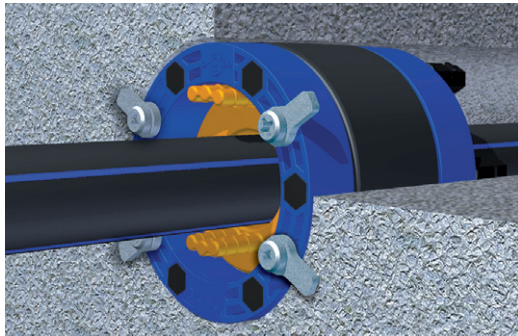
A Retightening a gasket insert (e.g. following removal)

Method 1: Completely remove released nuts and replace with new shear nuts (optionally available) and tighten as in 4 above.

Method 2: Retighten the existing nuts (**M11 Socket**) as in 4 above and torque to **5 Nm**.

*) Stabiliser lugs are optionally available for screwing on to the base ring of the Curaflex Nova® (Stabiliser Kit accessory). These ensure secure sealing under extreme pressure loads (see diagram overleaf).

Curaflex Nova®: Sealing with brains



For sealing services passing through walls and floors you need only two parameters: the pipe / cable outside diameter and the core bore or sleeve inside diameter. With this information you will always have the correct gasket insert available on site. Unexpected situations with different service diameters don't cause a problem and costly delays are avoided.

Another novelty: the base rings are made of special high-performance plastic with very high chemical resistance. Furthermore, Curaflex Nova® copes with any pressure conditions, whether or not hydrostatic pressure is present. And a further advantage of Curaflex Nova® – it acts as a blind plug to seal ducts until the services are introduced!

Aquagard concrete sealant for core drilled holes



Because concrete allows water seepage to a certain depth before it becomes impervious, it is possible that water will seep past the gasket insert. There is also the risk that reinforcing steel, cut during core drilling, will corrode.

DOYMA recommends sealing with Aquagard.

Aquagard base (primer) (Curaflex® 1710/1711)

Base or primer for Aquagard special paint

The primer penetrates deep into the concrete to seal capillaries and small air bubbles to render it permanently watertight. Thus, the water cannot wick past the gasket insert.

Aquagard special paint (Curaflex® 1715/1716)

Special paint for the sealing of core-drilled holes

Aquagard special lacquer seals the surface of the core-drilled concrete and simultaneously protects cut reinforcing steel against corrosion. It makes a perfect sealing surface for the gasket insert.

DOYMA 25 Years Guarantee! Further information at www.doyma.de